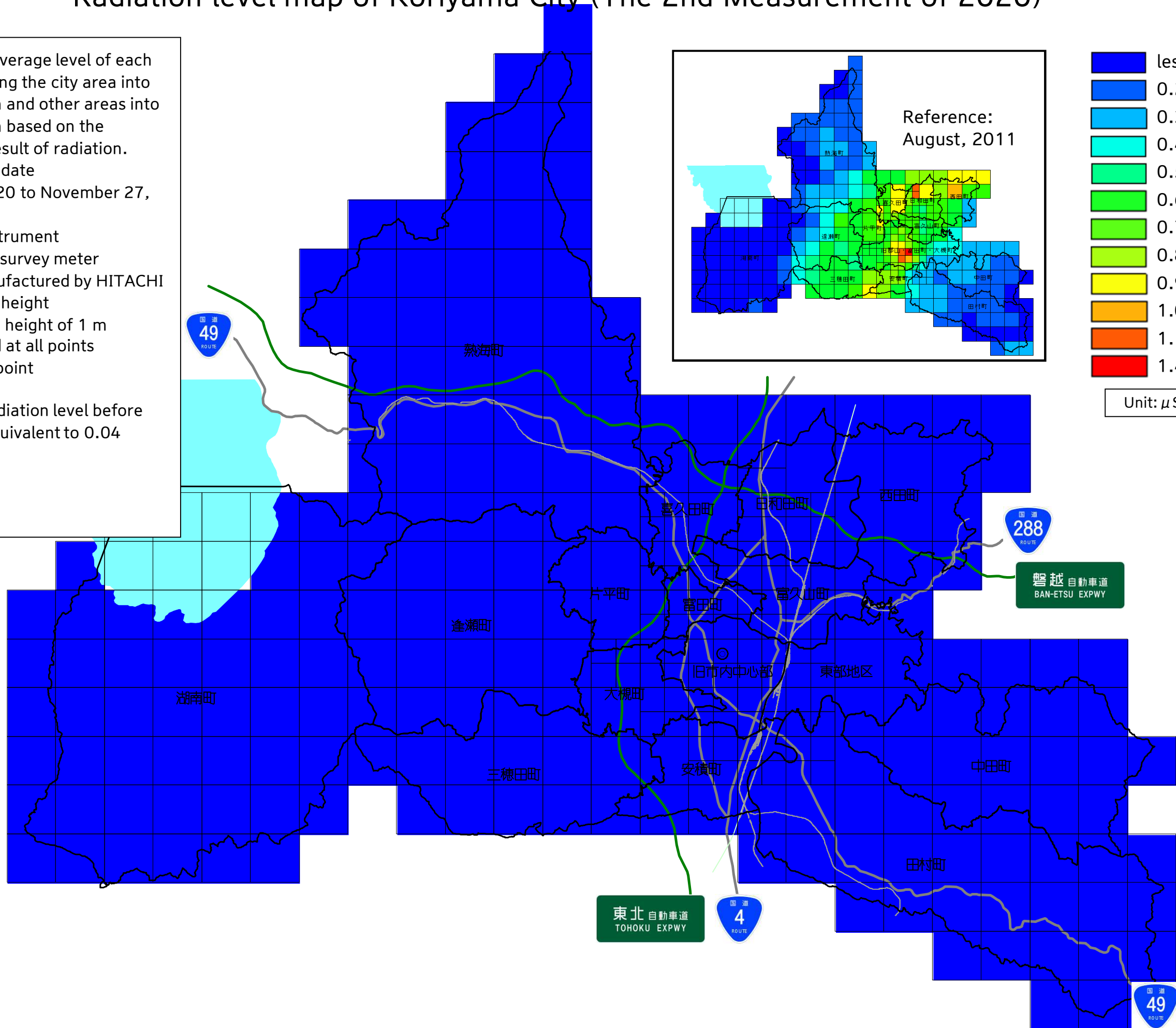


Radiation level map of Koriyama City (The 2nd Measurement of 2020)

Calculated the average level of each section by dividing the city area into sections of 1 km and other areas into sections of 2 km based on the measurement result of radiation.

- Measurement date
October 13, 2020 to November 27, 2020.
- Measuring instrument
NaI scintillation survey meter
TCS-172B manufactured by HITACHI
- Measurement height
Measured at the height of 1 m from the ground at all points
- Investigation point
2,500 points
Including the radiation level before the accident (equivalent to 0.04 $\mu\text{Sv/h}$).



- less than 0.23
- 0.23-0.29
- 0.3-0.39
- 0.4-0.49
- 0.5-0.59
- 0.6-0.69
- 0.7-0.79
- 0.8-0.89
- 0.9-0.99
- 1.0-1.09
- 1.1-1.19
- 1.4-1.49

Unit: $\mu\text{Sv/h}$

Reference:
August, 2011

東北自動車道
TOHOKU EXPWY

磐越自動車道
BAN-ETSU EXPWY

国道
49
ROUTE

国道
288
ROUTE

国道
4
ROUTE

国道
49
ROUTE

熱海町

喜久田町

田和町

西田町

逢瀬町

片平町

富田町

富久山町

湖南町

大槻町

旧市内中心部

東部地区

三穂田町

安積町

中田町

田村町