



Injury Surveillance Committee



Presenter: Yasushi Teranishi, chair



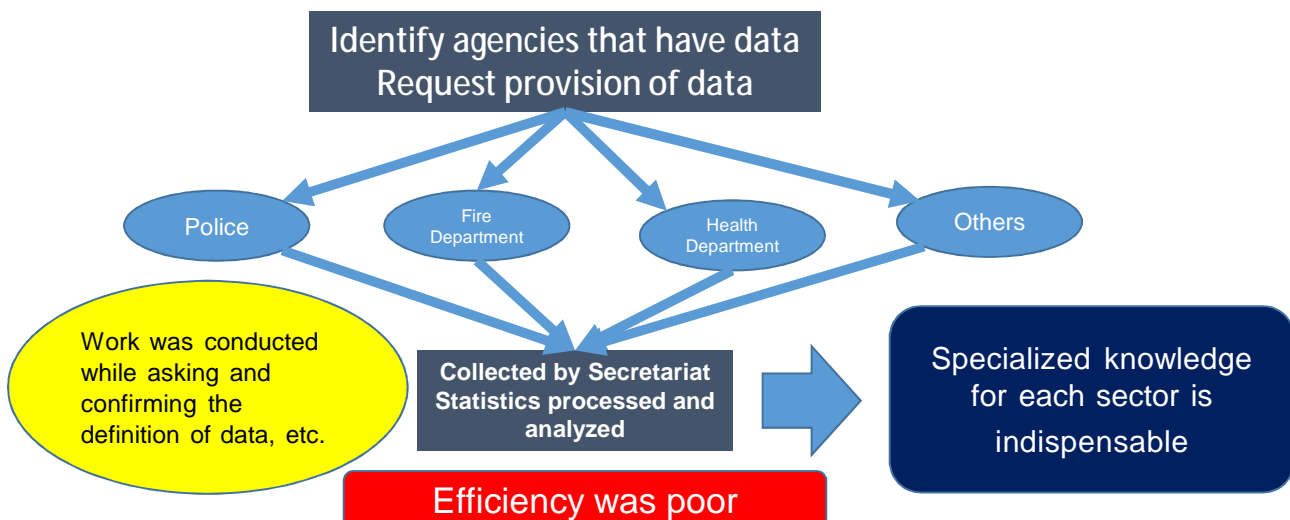
1. Necessity of Injury Surveillance Committee

Necessity 1: To conduct efficient data collection and analysis

The FY2014 Community Diagnosis was conducted by the Secretariat (City's Safe Community Promotion Section) to understand the situation of injuries and accidents in Koriyama City, but the work efficiency was poor.

Collection and analysis of data just by Secretariat
(City's Safe Community Promotion Section)

Fig. 1





Necessity 2: To collect and analysis continuous data

Indicator 1: An infrastructure based on partnership and collaborations, governed by a cross-sectional group that is responsible for safety promotion in their community.

Indicator 2: Long term sustainable programs covering both genders and all ages, environments and situations

Indicator 3: Programs that target high-risk groups and environments, and programs that promote safety for vulnerable groups

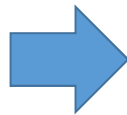
Indicator 4: Programs based on available evidence

Indicator 5: Programs that document the frequency and causes of injuries

Indicator 6: Evaluation measures to assess their programs, processes and effects of change

Indicator 7: Ongoing participation in national and international Safe Community networks

Secretariat is not capable of continuously and efficiently conducting indicators 4 to 6.



Creation of Injury Surveillance Committee

Decision by Safe Community Steering Committee (May 2015)

2



2. Role of Injury Surveillance Committee

Role 1 Collection and analysis of data on injuries and accidents (Indicator 4, Indicator 5)

- Collection of data on number of cases, etc., and preparation of a sustainable system
- Comparison of nationwide, Fukushima Prefecture and Koriyama City data
- Comparison by age groups, comparison by communities, etc.

Role 2 Verification of Safe Community activities (Indicator 4, Indicator 6)

- Is the data used as evidence for activities appropriate?
- Is the method for measuring the effect of activities appropriate?
- Are the set indicators appropriate?, etc.

Role 3 Advice for Safe Community activities based on data (Indicator 4, Indicator 5)

- Give advice to Steering Committee and Task Forces.

3

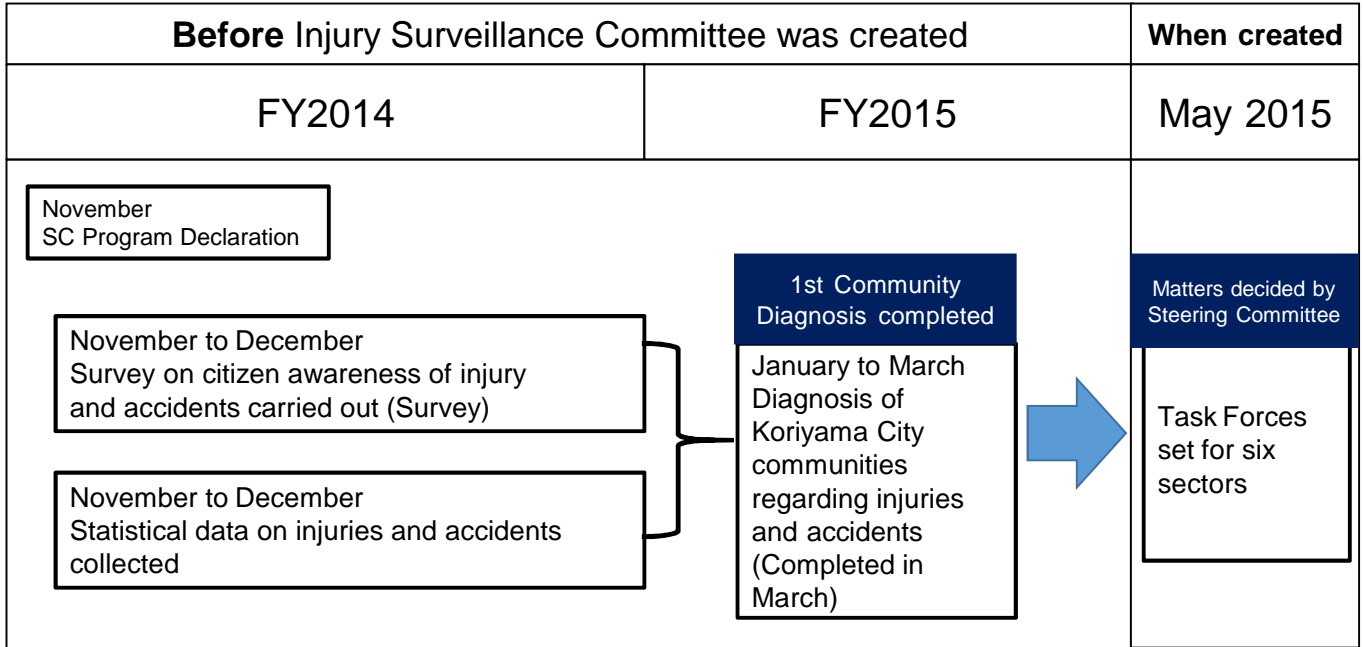


3. Injury Surveillance Committee Activities

1. Before the Committee was created, data was collected and analyzed by the Secretariat

The 1st Community Diagnosis had already been completed when the Injury Surveillance Committee was created, and it was decided to create Task Forces for six sectors.

Fig. 2

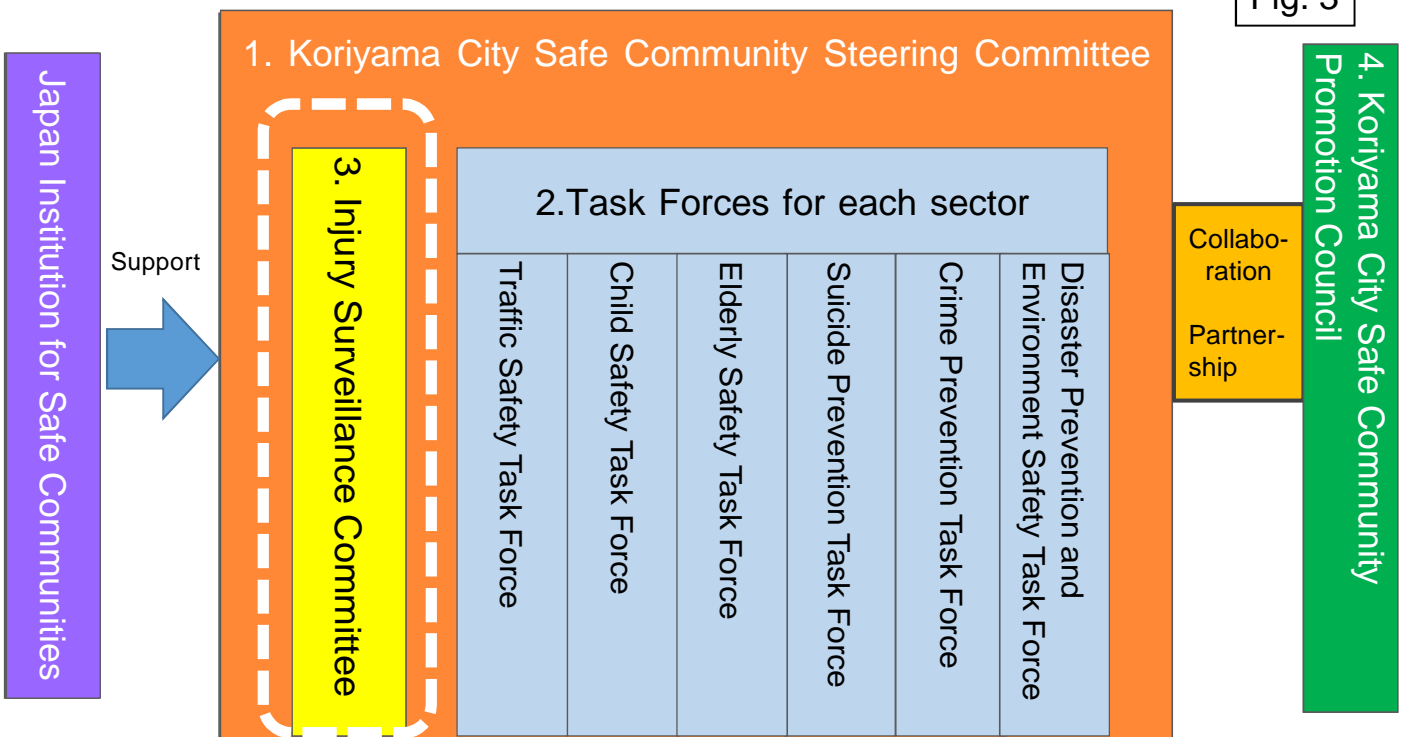


4



Creation of Injury Surveillance Committee in May 2015

Fig. 3



4



4. Configuration of Injury Surveillance Committee

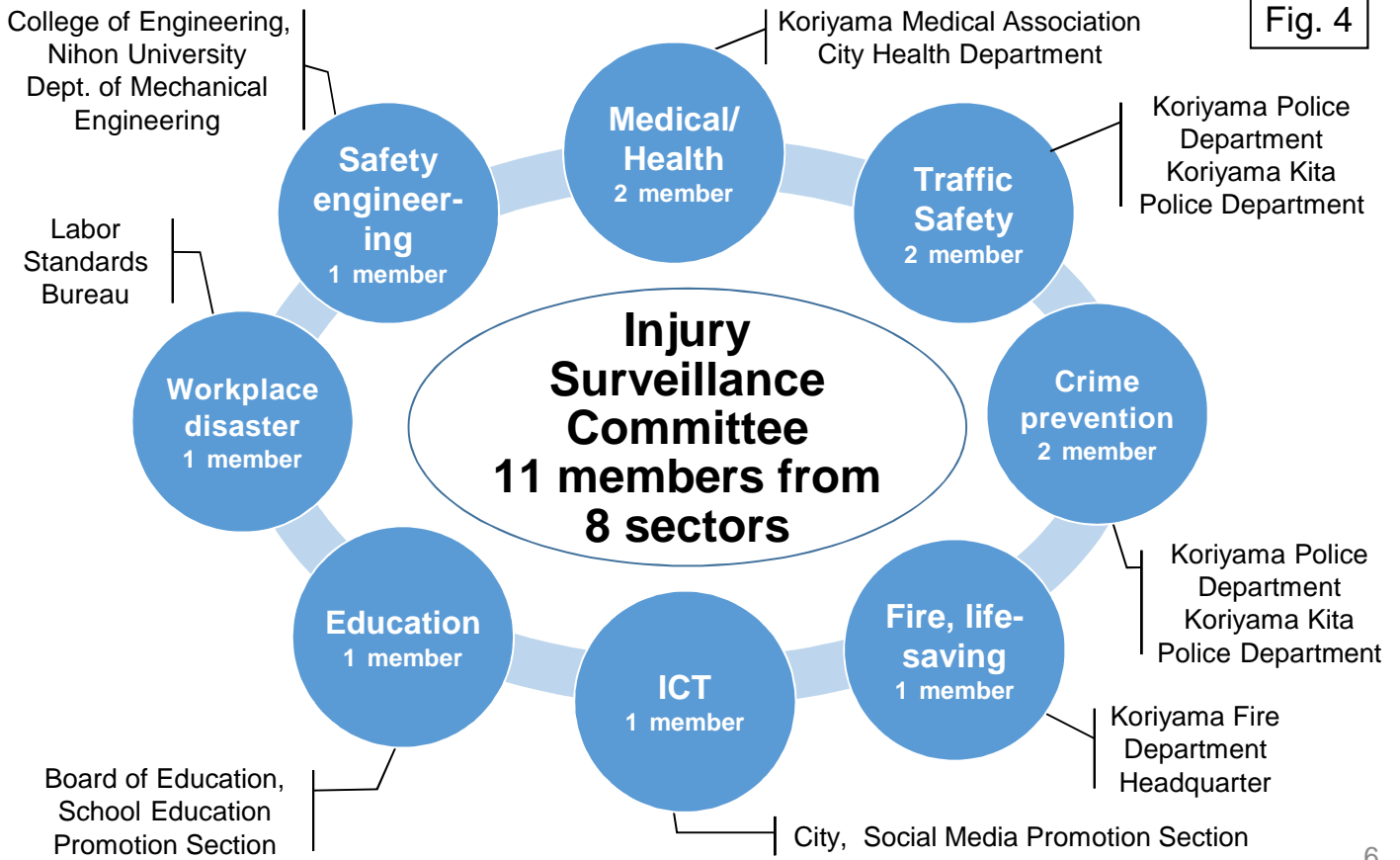
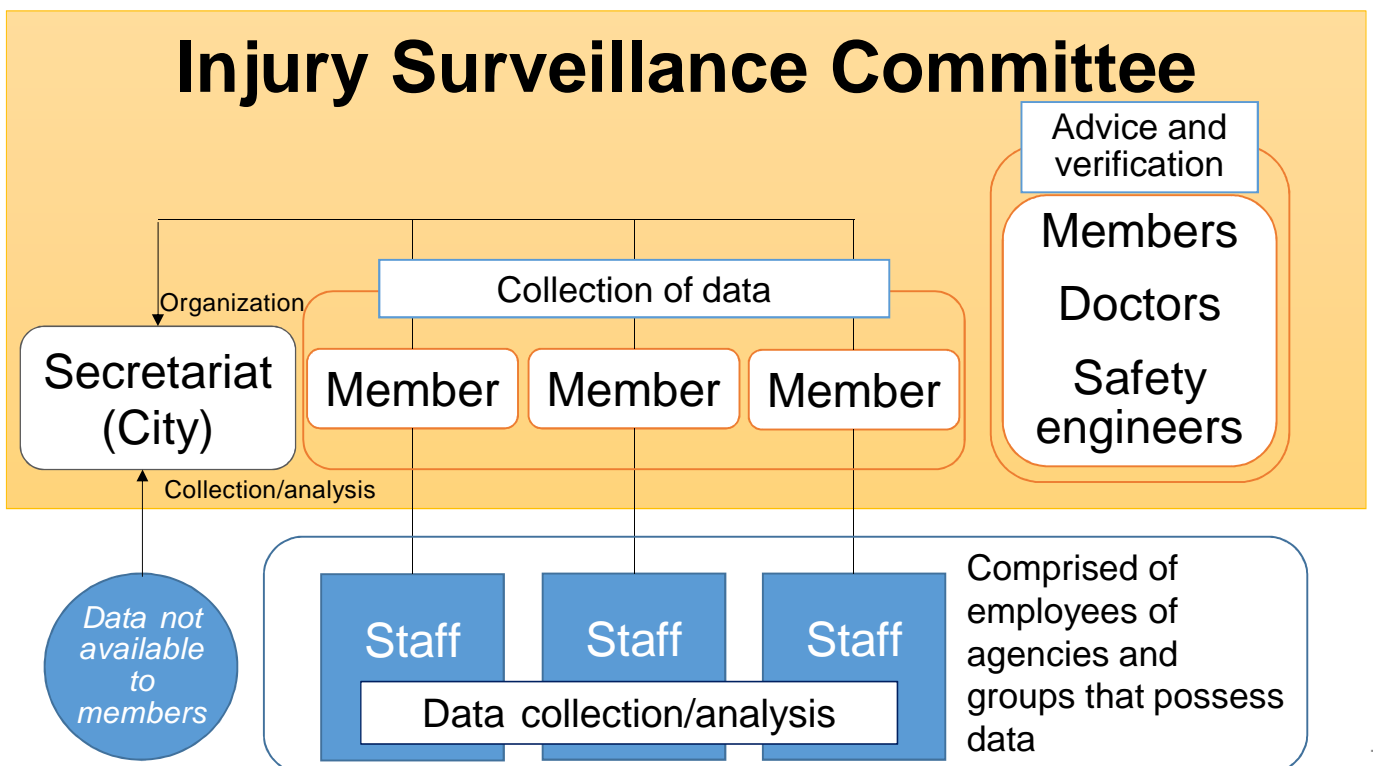


Fig. 4



Members participate not only as individuals, but also direct the staff to collect and analyze data.

Fig. 5





2. Outline of activities conducted to present

table. 1

Session	Date	Main details
1	May 26, 2015	<ul style="list-style-type: none"> • Seminar on Safe Community seminar held • Results of community diagnosis on injuries and accidents, etc. confirmed • Reasons for selecting six sectors for which measures are to be taken confirmed
2	February 18, 2016	<ul style="list-style-type: none"> • Priority challenges selected by each Task Force verified based on data, and advice given on areas with data missing, etc. • Missing data provided to Task Forces (Provided at a later date when data became available)
3	August 18, 2016	<ul style="list-style-type: none"> • Studies on actual measures for each Task Force confirmed • Data required for each Task Force confirmed (Decided to conduct citizen survey for areas missing data) • Methods of conducting 2nd Community Diagnosis discussed

8



2. Outline of activities conducted to present 2

table. 2

Session	Date	Main details
4	November 8, 2016	Preliminary guidance
5	February 14, 2017	In review of 2nd Community Diagnosis, deliberations centered on how to read the data, data that would be needed in the future, and data that was lacking, etc.
6	June 1, 2017	Confirmation of each Task Force's actual measures, and review of performance indicators
7	August 29, 2017	Confirmation of Application for Designation

9



3. 1st Injury Surveillance Committee meeting held on May 26, 2015

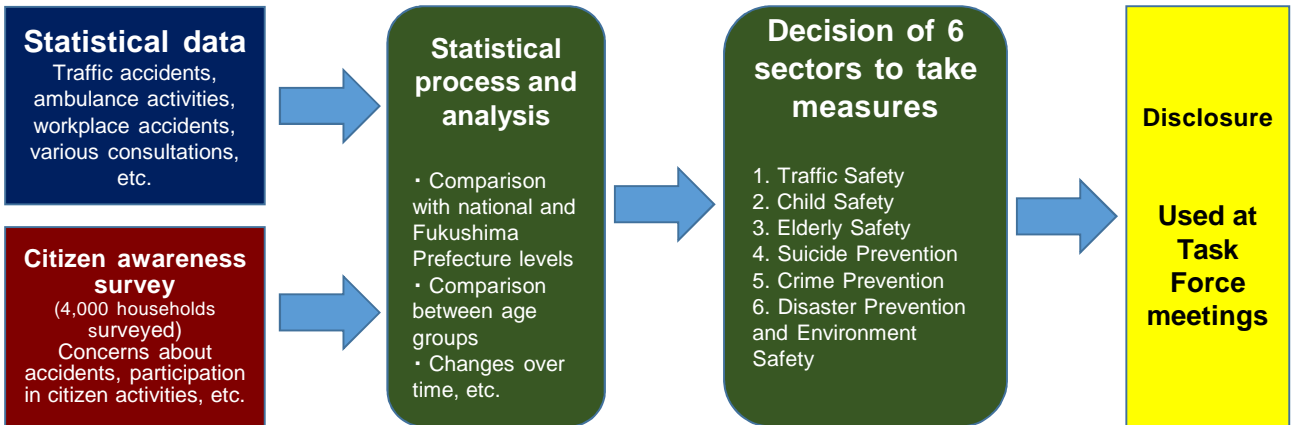
- Safe Community seminar held, and results of community diagnosis on injuries and accidents, etc. confirmed

Fig. 6

Safe Community seminar held

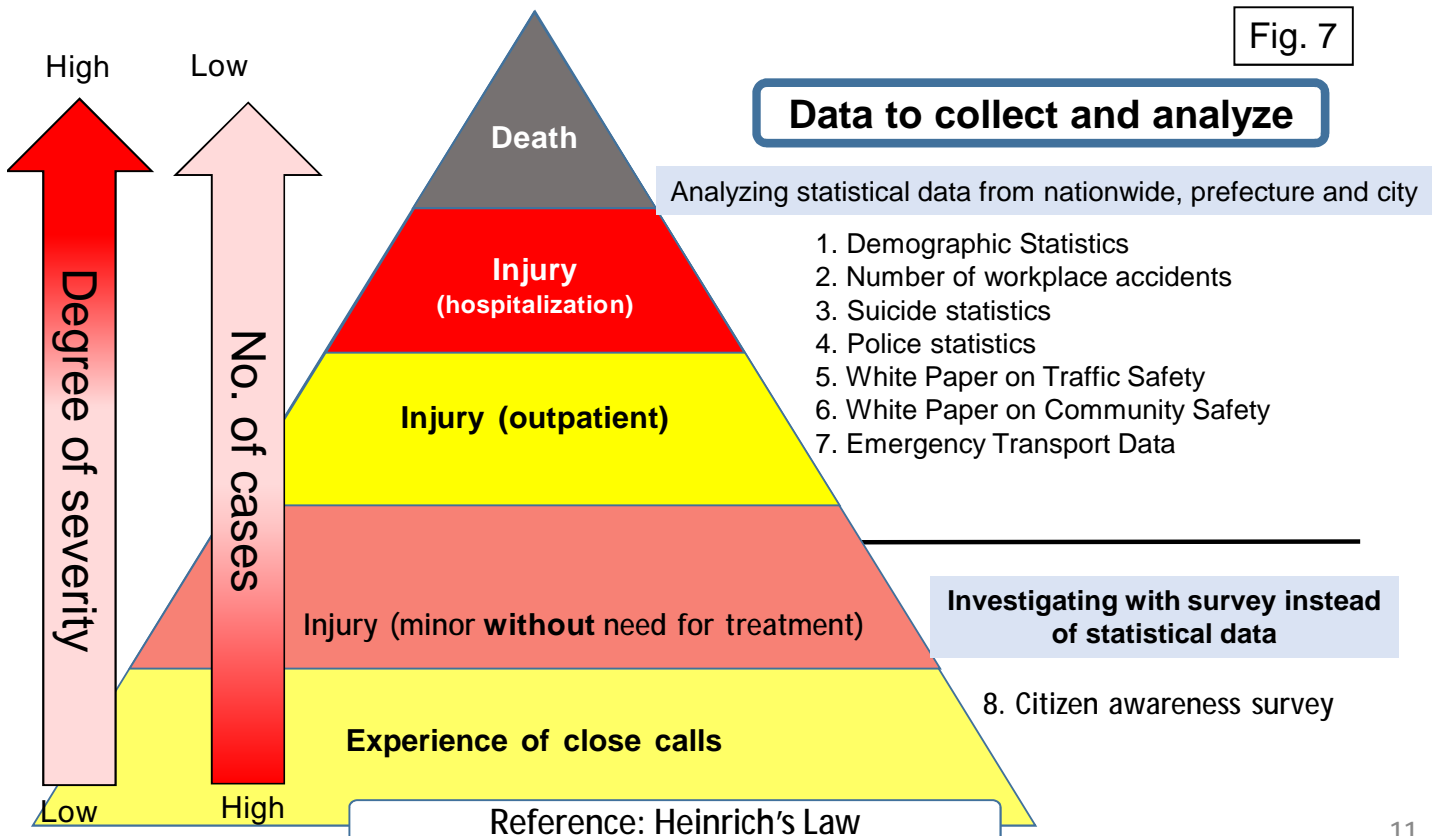
Lecturer: Professor Yoko Shiraishi, Director of Japan Institution for Safe Communities

Confirmation of community diagnosis results



Understanding the overall situation of injuries and accidents

Fig. 7





Main injury data used by Task Forces and the update frequency

table3

Update frequency	Name of statistics	Traffic Safety	Child Safety	Elderly Safety	Suicide Prevention	Crime Prevention	Disaster Prevention and Environment Safety
Annually	1 Demographic statistics			●	●		
	2 Number of workplace accidents						●
	3 Suicide statistics				●		
	4 Police statistics	●				●	
	5 White Paper on Traffic Safety	●					
	6 White Paper on Community Safety					●	
	7 Emergency Transport Data	●	●	●	●	●	●

12



Data, other than injury data, used by Task Forces and the update frequency

table4

Frequency of implementation	Name of statistics	Traffic Safety	Child Safety	Elderly Safety	Suicide Prevention	Crime Prevention	Disaster Prevention and Environment Safety
Monthly	Survey on illegal solicitation and scouting					●	
Yearly	Situation of programs to support the elderly			●			
	Number of consultations regarding elder abuse			●			
	Number of consultations regarding child abuse		●				
	Number of consultations regarding abuse by spouse, etc.					●	
Every 2 years	8 Citizen Awareness Survey	●	●	●	●	●	●

13



4. 2nd Injury Surveillance Committee meeting held on February 18, 2016

● Priority challenges selected by each Task Force verified based on data, and advice given on areas with data missing, etc.

table5

Sector	Details of advice
Traffic Safety	Of the selected priority challenges, “Many bicycle accidents involving sr. high school students” was based on nationwide data, so advice given to analyze data for Koriyama City. -> Data was provided from Injury Surveillance Committee at a later date.
Child Safety	Of the selected priority challenges, there was no data showing that “child abuse was increasing”. The following situation was identified after talking to the Task Force. -> The rules (recording methods) for statistics differed according to the consulting services. -> The Prefecture and City have consulting services, but the jurisdiction differ so data cannot simply be totaled. This was set as an issue to study in the future.

14



5. Provision of data to Task Forces after 2nd meeting * Provided as needed

● Missing data was provided to each Task Force.

Situation of bicycle accidents in Koriyama City 2012 to 2015

- No. of accidents by month ○ No. of accidents by day ○ No. of accidents by time zone
- No. of accidents by type (rear-end collisions, front-on collisions, when turning right or left, etc.)
- No. of accidents by school grade ○ No. of accidents by type of road (intersection, single lane, etc.) ○ No. of accidents by traffic rule violation (ignoring red lights, failure to stop, etc.)

15



6. 3rd Injury Surveillance Committee meeting held on August 18, 2016

Six months had passed from last meeting, so committee met to identify state of progress. It was found that the following data was newly required.

1. Traffic Safety Task Force

[Incidents of close call bicycle accidents]

[Statistics of bicycle accidents according to occurrence situation]

[Awareness Survey of Elderly People]

2. Elder Safety Task Force

[Place of accident and injury from tumbling]

[Home environment of people transported by ambulance because of accidental suffocation]

[Place where accidental suffocation occurred]

16



3. Suicide Prevention Task Force

[Data for emergency transport]

[Data for transport to hospital]

[Recognition of Suicide Prevention Counseling Services]

4. Crime Prevention Task Force

[Recognition of information morals, etc.]

[Opinions regarding solicitation, etc.]

[Opinions regarding security cameras, etc.]

5. Disaster Prevention and Environment Safety Task Force

[Transition in number of workplace accidents]

[Transition in number of workplace accidents by industry]

It was decided to conduct a survey during the 2nd Community Diagnosis in the fall of 2016, and to collect as much data as possible.

17



7. 4th Preliminary Guidance held on November 8, 2016

There was no report about using data from medical insurance or medical agencies. Has this not been considered?

At this time, we are not using medical insurance data. For emergency medicate, there are primary emergencies, secondary emergencies, and tertiary emergencies. We have data on this and will look into using this data in the future.

Please provide examples in which the current understanding from a subjective point and objective facts based on data differ or match.

Example of difference

Subjective understanding Uncertainties toward health damage from radiation
Objective data There has been no health damage.

Example of match

Subjective understanding Isn't the rate of crimes in front of Koriyama Station high?
Objective data Rate of crimes is highest within Koriyama Eki-mae Koban district

Example that is not match or difference, but cannot be determined from data

Subjective understanding Isn't child abuse on the rise?
Objective data The number of consultations regarding abuse continues to drop.

* There are questions as to whether the data is correctly reflecting the actual state.

18



8. Implementation of 2nd Community Diagnosis

Period: October 2016 to March 2017

Community diagnosis on injuries and accidents occurred in Koriyama are conducted every other year.

1st Diagnosis (December 2014)

The first diagnosis was conducted in 2014, **and was used to select the six sectors to address and to select priority challenges.**

2nd Diagnosis (October 2016)

This diagnosis aimed to collect data to use as evidence for actual measures. The required data presented by the six Taskforce Committees (Traffic Safety, Child Safety, Elder Safety, Suicide Prevention, Crime Prevention, Disaster Prevention and Environment Safety) were added as a survey.

* Disclosed in March 2017

19



8. Implementation of 2nd Community Diagnosis

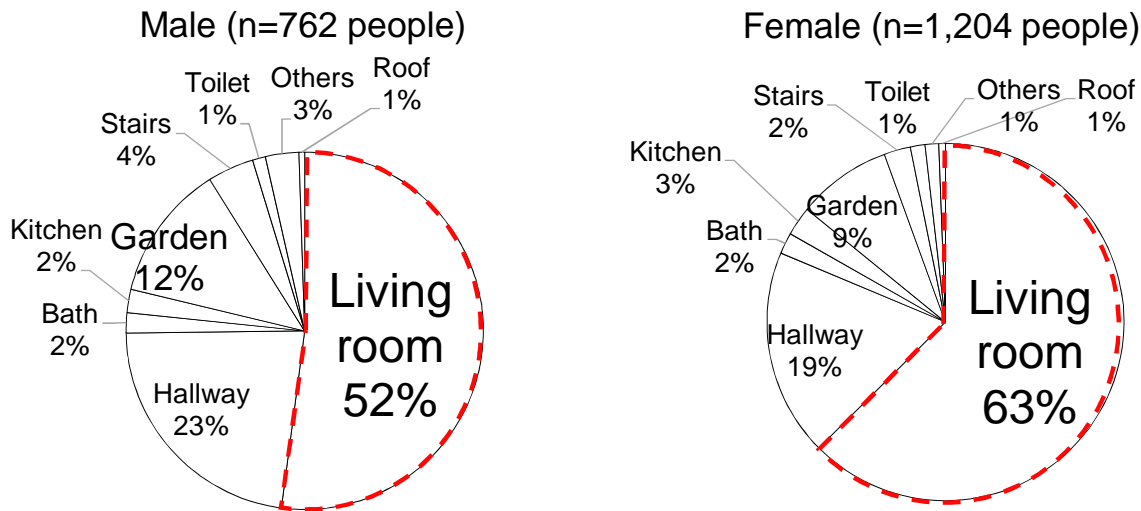
Period: October 2016 to March 2017

1. Detailed analysis of City's statistical data

Place in home where elder was injured and required emergency transport

Living room was highest for both men and women.
Women had more injuries.

Graph.1



Source: Koriyama Fire Department "FY2014-2016 Emergency Transport Data"



8. 2nd Community Diagnosis Period: October 2016 to March 2017

Citizen awareness survey for 2nd Community Diagnosis

1. Purpose

Investigate injuries, accidents, close-calls, and factors for citizens' concerns, etc. that cannot be understood with public statistical data, etc.

* Previous survey conducted in FY2014

2. Target

4,000 households and 8,000 people making up those households that are randomly selected from the Koriyama City Basic Resident Register * Same conditions as previous time.

3. Schedule

FY2016, September to October
November to December
FY2017, January to February
March

Surveys sent out and collected
Results input, tabulated, and analyzed
Community diagnosis conducted with statistical data
Community diagnosis results released



8. 2nd Community Diagnosis Period: October 2016 to March 2017

Citizen awareness survey for 2nd Community Diagnosis

Details of survey * Partial excerpt

Q4: Where are you worried about getting injured in your home?
(Multiple answers allowed)

1. No places	2. Yard, wall, ditch	3. Entrance, gate
4. Parking lot	5. Hallway	6. Stairs
7. Living room	8. Bedroom, children's room	9. Kitchen
10. Bathroom, washstand area, toilet	11. Veranda	12. Others ()

More details

The previous survey did not ask where injuries had occurred in the home.

Investigation of close calls

Investigation of cases that did not result in accidents

Q15. When did you ever feel risks from bicycles ridden by other people (or were you involved in accident)?

1. Using cell phone while riding bicycle	2. Not staying on left	3. Ignoring red light
4. Two or more bicycles riding side by side	5. Ignoring stop signs	6. Excessive speed
7. Failure to turn light on at night	8. Wearing earphones while riding bike	9. Others ()



8. 2nd Community Diagnosis Period: October 2016 to March 2017

Details of survey * Partial excerpt

Q16. Do you know of a child abuse counseling service in Koriyama City?
(Select one)

1. Yes -> Go to Q17. 2. No -> Go to Q19.

Q17. Which of the following counseling services for child abuse do you know?
(Select answer for each one)

Name of Counseling Service	Phone	Know	Do not know
Koriyama City Child and Home Counseling Center	Phone: 024-924-3341	1	2
Fukushima Prefecture Child Welfare Counseling Services	Phone: 024-935-0611	1	2
National hotline for child counseling services	Phone: 189	1	2
Children's Rights 110 Hotline	Phone: 0120-007-110	1	2

Setting of investigation item required by Task Forces

Recognition of each counseling service also investigated

Q18. Where did you learn about counseling services for child abuse?
(Multiple answers allowed)

1. Leaflet, pamphlet	2. TV	3. Koriyama City website
4. Fukushima Prefecture website	5. National government website	6. Internet information
7. Koriyama Gazette	8. Newspaper	9. Radio
10. Lectures, seminars, schools, etc.	11. Others ()	

In addition to recognition, method of recognition investigated



8. Implementation of 2nd Community Diagnosis

Period: October 2016 to March 2017

Situation of Citizen awareness survey usage (Household Form, 8 questions)

- ①Traffic Safety ②Child Safety ③Elder Safety ④Suicide Prevention
⑤Crime Prevention ⑥Disaster Prevention and Environmental Safety

table. 6

Question	Summary	Situation of use
1	Basic information (gender, age group, household composition, etc.)	-
2		
3	Situation of safety and security initiatives	⑤⑥
4	Places in home where there are concerns of injury	②③
5	Places in home where injuries have occurred	②③
6	Crime prevention measures taken in the home	⑤
7	Disaster contingency measures taken in the home	⑥
8	Injuries and accidents of family members younger than 20	②

24



8. Implementation of 2nd Community Diagnosis

Period: October 2016 to March 2017

Situation of Citizen awareness survey usage (Personal Form, 34 questions)

table. 7

Question	Summary	Situation of use
1 to 5	Basic information (gender, age group, occupation, etc.)	-
6 to 7	No. of people with whom respondent can talk about worries	-
8	Degree of safety and security in Koriyama City as perceived by citizens	-
9 to 10	Safe Communities	-
11	Injuries and accidents that respondent currently is worried about	①⑥
12	Situation of participation in community activities	⑤⑥
13	Degree of interaction with community residents	⑤
14 to 15	Manners of other people riding bicycles	①
16 to 20	Issues related to child abuse, etc.	②
21 to 24	Issues related to senior dementia	③
25 to 27	Recognition of counseling services for suicide prevention	④
28 to 29	Situation of smartphone and SNS use, etc.	⑤
30 to 31	Issues related to illegal solicitation	⑤
32 to 33	Issues related to security cameras	⑤
34	Injuries and accidents while farming (including kitchen gardens)	⑥

25



9. 5th February 14, 2017

* Deliberations regarding results of 2nd Community diagnosis

1. It is highly probable that "Sports injuries" sustained by youth (ages 7 to 17) may exceed injuries from "Traffic accidents".
2. It is necessary to examine the general situation of injuries and accidents.
 - > Materials explaining the outline of the community diagnosis were prepared by the Secretariat later.

Advice from JISC

In addition to emergency transports, shouldn't there be data on injuries and accidents from fires?

-> Data was collected and analyzed later with cooperation from the Fire Department Headquarter

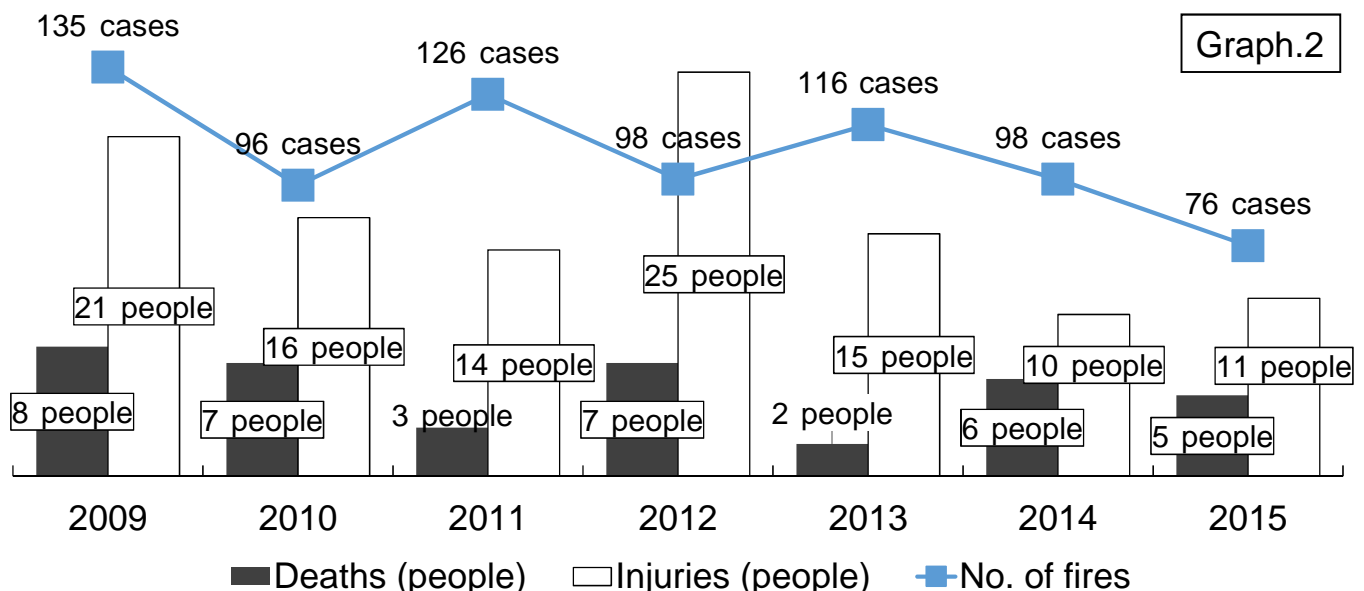
26



9. Following advice received at 5th meeting

Data on fires added following advice from JISC

The number of fires is on the decline.
The number of deaths and injuries repeatedly increases and decreases.





10. 6th June 1, 2017

One year had passed since the previous activity report, so a meeting was held to confirm the situation of progress and performance indicators

Advice to all Taskforce Committees

1. How the activities in actual measures link to the performance indicators must be expressed with solid numbers and be convincing
2. Many programs are approaching the same target. Efficiency can be improved by working together to approach the target.

28



11. 7th August 29, 2017

●Confirmation of contents of application for designation, and performance

* The surveys collected independently by each Taskforce Committee and provided in the application for designation must be confirmed.

table. 8

Taskforce Committee	Survey name	Target	Main details investigated
Traffic Safety	Survey on preventing bicycle accidents	Sr. high students	Survey on whether students' awareness changed after watching video during Traffic Safety Class
Safety for Children	Survey on accidents and injuries	Parents	Recognition of area around home and traffic hotspots
	Awareness survey on child abuse		Changes in awareness after watching video on actions of child abuse, etc.
Disaster Prevention and Environment Safety	Impressions of disaster prevention patrols	Elementary students Parents	Changes in awareness of disaster prevention before and after creating community disaster prevention map
	Survey on Disaster Prevention awareness	Residents of Kurume District	Matters community residents think need improvement for disaster prevention

29



5. Results and challenges

Results

1. 2nd Community Diagnosis was disclosed
2. Taskforce Committee activities were transformed into programs with more basis

Challenges

1. Planning the 3rd Community Diagnosis
2. Understanding the details and results of surveys independently collected by each Taskforce Committee

30

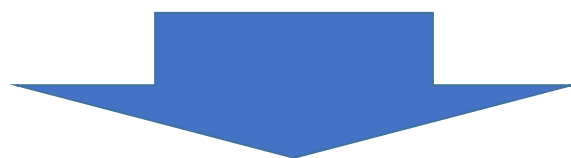


6. Future activities

1. Verification of evaluation of each Taskforce Committee's measures, and evaluation of studied improvement measures



2. Verification of evaluation and analysis of survey independently collected by each Taskforce Committee



**Study of details for 3rd
Community Diagnosis**

31



Thank you for listening.

Injury Surveillance Committee