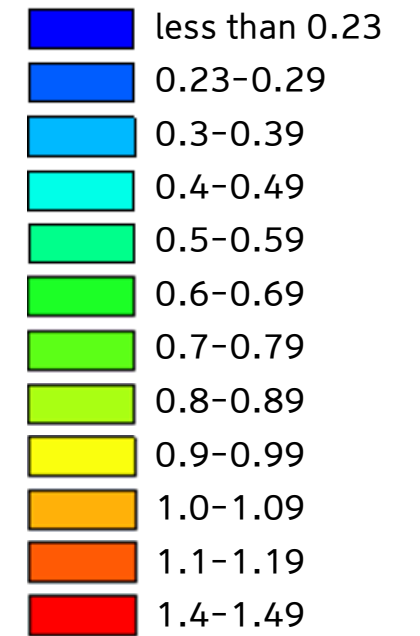
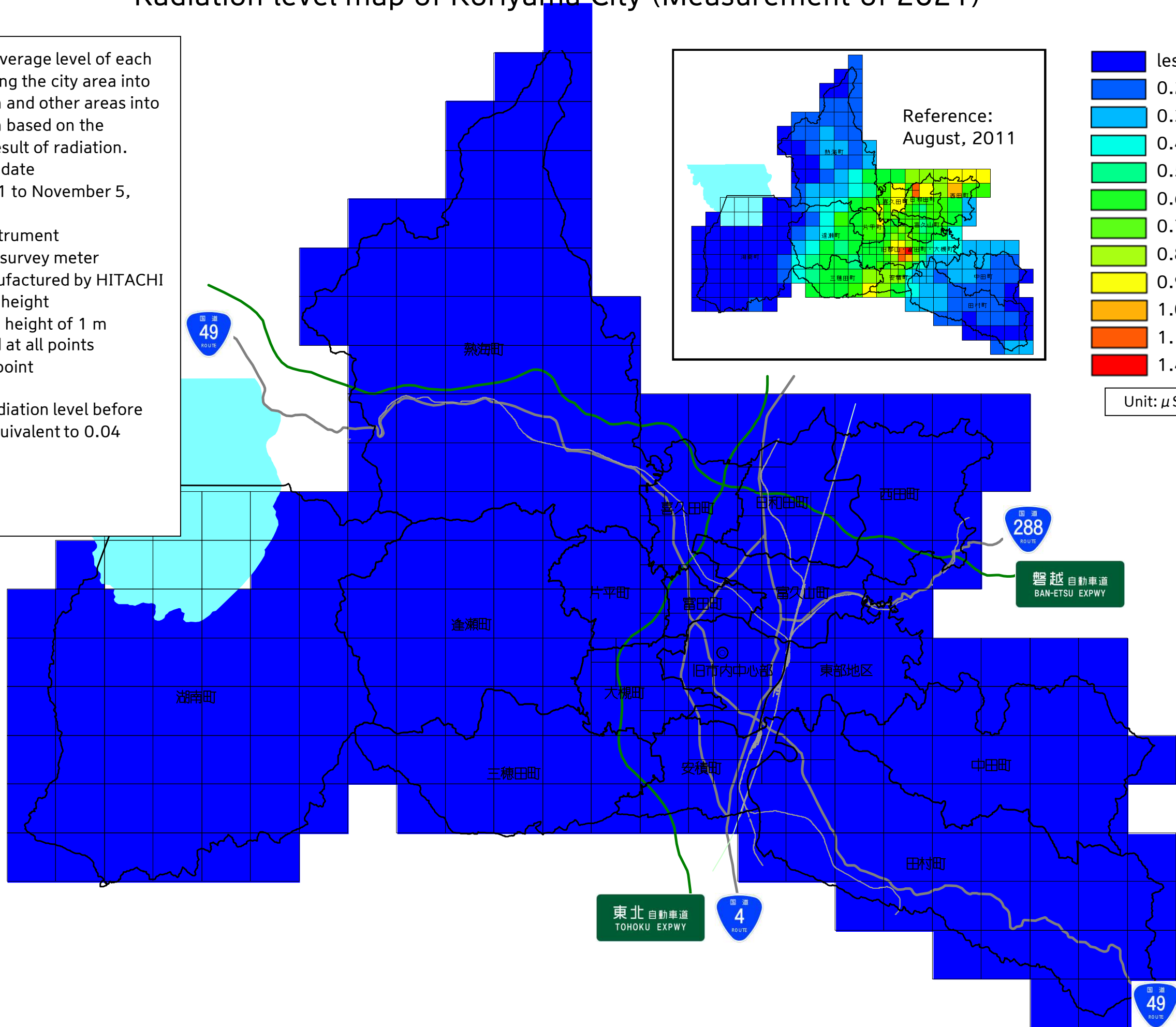


Radiation level map of Koriyama City (Measurement of 2021)

Calculated the average level of each section by dividing the city area into sections of 1 km and other areas into sections of 2 km based on the measurement result of radiation.

- Measurement date
August 31, 2021 to November 5, 2021.
- Measuring instrument
NaI scintillation survey meter
TCS-172B manufactured by HITACHI
- Measurement height
Measured at the height of 1 m from the ground at all points
- Investigation point
2,500 points
Including the radiation level before the accident (equivalent to 0.04 $\mu\text{Sv/h}$).



Unit: $\mu\text{Sv/h}$

