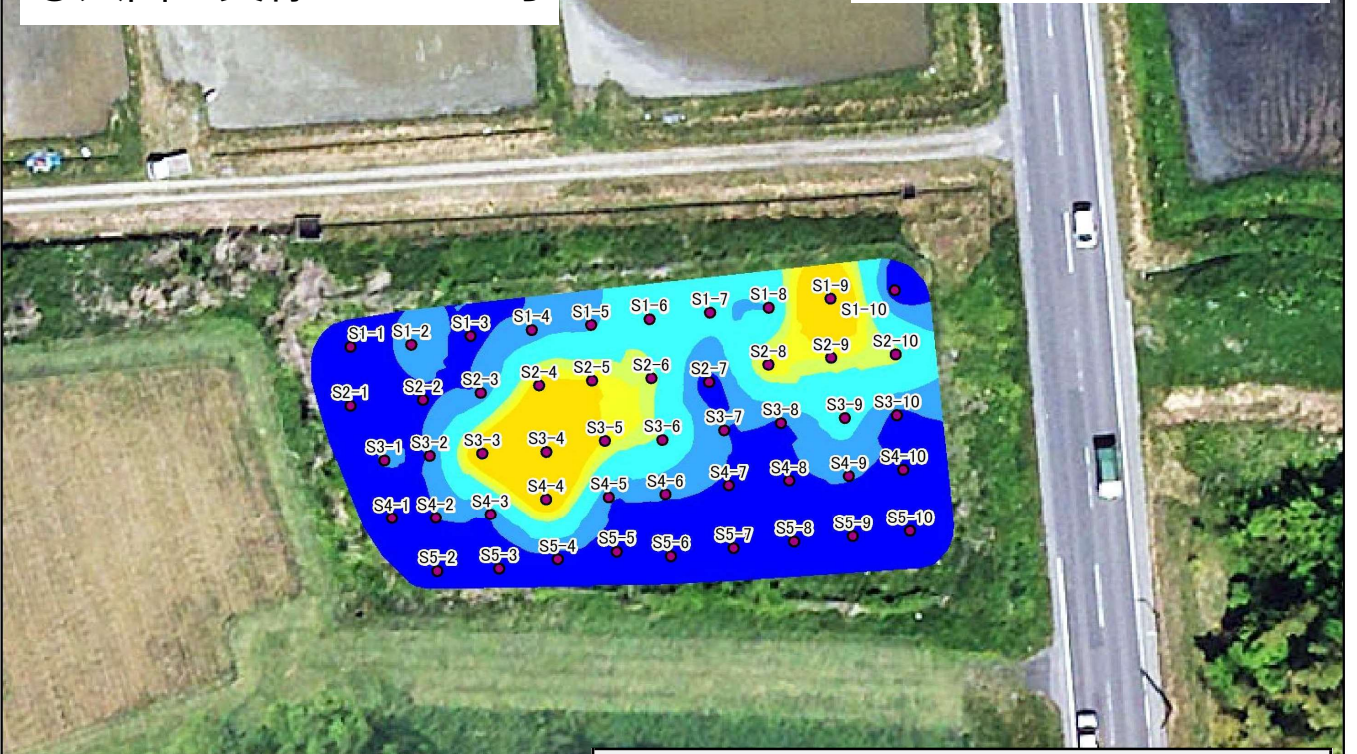


①大田2支線17-3-4号

調査年月：令和5(2023)年6月



測定点結果一覧(Cs134、137濃度)					
測定点	Bq/kg-Dry	測定点	Bq/kg-Dry	測定点	Bq/kg-Dry
S1-1	550	S3-1	3,268	S5-2	1,745
S1-2	4,094	S3-2	3,062	S5-3	670
S1-3	2,470	S3-3	13,230	S5-4	1,700
S1-4	3,584	S3-4	15,350	S5-5	1,900
S1-5	4,481	S3-5	9,890	S5-6	1,800
S1-6	7,550	S3-6	7,750	S5-7	1,800
S1-7	5,310	S3-7	3,100	S5-8	2,400
S1-8	4,810	S3-8	2,600	S5-9	2,200
S1-9	16,290	S3-9	6,510	S5-10	567
S1-10	1,200	S3-10	2,300		
S2-1	1,230	S4-1	380		
S2-2	2,562	S4-2	3,000		
S2-3	3,379	S4-3	3,287		
S2-4	11,220	S4-4	13,250		
S2-5	10,180	S4-5	3,200		
S2-6	8,130	S4-6	3,200		
S2-7	1,740	S4-7	2,700		
S2-8	8,350	S4-8	2,600		
S2-9	8,890	S4-9	3,200		
S2-10	8,780	S4-10	2,000		

池底放射性セシウム濃度マップ【Cs134、137濃度(Bq/kg-Dry)】 凡例

