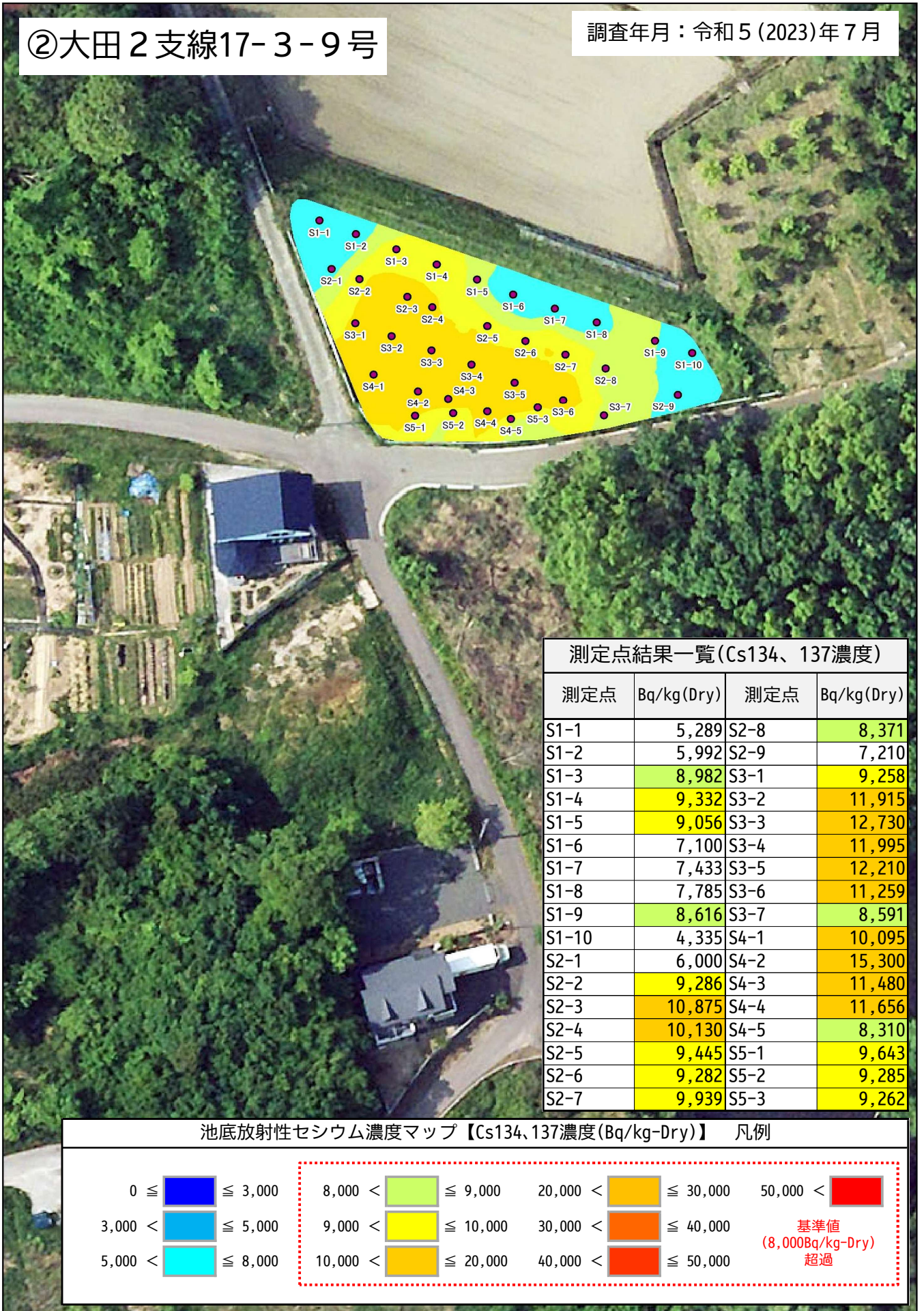


②大田2支線17-3-9号

調査年月：令和5(2023)年7月



測定点	Bq/kg(Dry)	測定点	Bq/kg(Dry)
S1-1	5,289	S2-8	8,371
S1-2	5,992	S2-9	7,210
S1-3	8,982	S3-1	9,258
S1-4	9,332	S3-2	11,915
S1-5	9,056	S3-3	12,730
S1-6	7,100	S3-4	11,995
S1-7	7,433	S3-5	12,210
S1-8	7,785	S3-6	11,259
S1-9	8,616	S3-7	8,591
S1-10	4,335	S4-1	10,095
S2-1	6,000	S4-2	15,300
S2-2	9,286	S4-3	11,480
S2-3	10,875	S4-4	11,656
S2-4	10,130	S4-5	8,310
S2-5	9,445	S5-1	9,643
S2-6	9,282	S5-2	9,285
S2-7	9,939	S5-3	9,262

0 ≦ ≦ 3,000	8,000 < ≦ 9,000	20,000 < ≦ 30,000	50,000 <
3,000 < ≦ 5,000	9,000 < ≦ 10,000	30,000 < ≦ 40,000	基準値 (8,000Bq/kg-Dry) 超過
5,000 < ≦ 8,000	10,000 < ≦ 20,000	40,000 < ≦ 50,000	