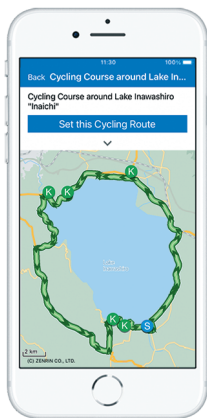


With this app,
even first-time visitors can bike stress-free /

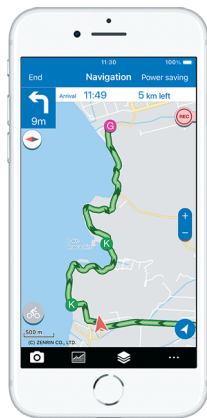
For a fun and smooth Inaichi experience

How to use BICYCLE NAVITIME,
a recommended app for going around Inaichi and the surrounding area



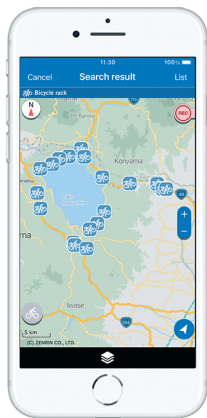
POINT 01 Planning

Be sure to make a plan before beginning your ride. Using the app, you can add the five recommended Inaichi visiting spots, broadening your enjoyment of Inaichi. You can confirm the riding time beforehand, so enjoy cycling in accordance with the time of your stay and your strength level.



POINT 02 Navigation

Set your smartphone in the smartphone holder, and press "Start navigation" to begin the navigation. The app will provide navigation to your destination with displays on a map and spoken guidance. The app also includes a cyclocomputer function, so you can enjoy full-on cycling while confirming your speed, your riding time, your riding distance, and so forth.



POINT 03 Cycle Station Search

With the app, you can search for cycle stations at resting spots. You can confirm the services available at each station, such as the usage of bicycle racks and toilets, the lending of air pumps, and the like. There are many cycle stations around the lake, so feel free to drop by one when you get tired.



Cycling Course around Lake Inawashiro

INAICHI Cycling Guide

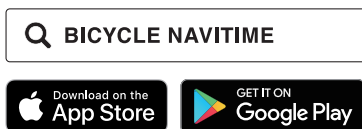
Spoken navigation for Inaichi on a smartphone app



Top page > Menu > Cycling courses

[Cycling Course around Lake Inawashiro "Inaichi"]

Tap the "Course details" button on the page



CI202103



FREE!

POWERED BY NAVITIME

Going around the great views and cultural assets of Lake Inawashiro

Cycling Course **INAICHI** around Lake Inawashiro

Distance: Approx.57.6km
Time required: Approx.3h21m
Elevation gain: Approx.321m

Fun ways to cycle Inaichi, which you should do at least once!

This cycling course takes you around Lake Inawashiro, the fourth-largest lake in Japan. Also known as "Inaichi" among cyclists, it is recommended that this course be ridden counterclockwise. Gazing at the surface of the lake from the lakeside road and looking up at Mount Bandai, your spirits will naturally be lifted when you're in the middle of the resplendent views!

In fall of each year, the "Cycle Aid Japan in Koriyama Tour de Lake Inawashiro" cycling event is held, starting and finishing at Bandai-Atami and attracting cyclists from all corners of the country.

- BICYCLE NAVITIME Recommended Cycling Course (Approx. 57.6 km)
- Cycle Aid Japan in Koriyama Tour de Lake Inawashiro 85-km course



⚠ To safely enjoy cycling:

This course travels not on a dedicated road for bicycles but along a regular road. Please be particularly cautious of the following locations when riding.

- ⚠ Narrow shoulders on roads - Prefectural Road 9 Inawashiro Konan Route, Konanmachi-Hamaji to Yamagata, Inawashiro-machi
- ⚠ Narrow shoulders on roads - National Route 49, Okinajima Harbor to Aizu Recreation Park
- ⚠ Kuromori Tunnel
- ⚠ Slipping due to wet, fallen leaves - Prefectural Road 376 Konan Minato Route, Oninuma Area
- ⚠ Nakayama Tunnel

P Parking area available

01 SPOT Michi-no-Eki (Roadside Station) Inawashiro

Located at the foot of Mount Bandai, replete with souvenirs and a food court. The square on the northern side provides a great view, with Mount Bandai towering before your very eyes.

*The Michi-no-Eki parking area is for users of Michi-no-Eki. Please refrain from parking that impedes operations and maintenance (leaving your vehicle, etc.).

Opening hours 9:00-18:00 May be closed for special holidays.



02 SPOT Tenkyokaku

Prince Arisugawa Takehito admired the beauty of the lakeside and built this villa. It is a Nationally Designated Important Cultural Property. There is a snack corner, and cyclists are welcome.

Opening hours (May to October) 8:30-17:00 (November to April) 9:00-16:30



03 SPOT Jurokkyo Sluice Gate

This is where scientific observations of river water level were made for the first time in Japan, opening the way for using the water resources of Lake Inawashiro. This is a symbol of the Asaka Canal, which laid the foundation for the development of Koriyama. It is the oldest concrete sluice gate currently in use.



04 SPOT Hanryozakai no Omatsu (Domain Boundary Great Pine) Rest Facility

This spot transmits to posterity the former site of a Japanese red pine which served as a landmark for the boundary between the Aizu Domain and Nihonmatsu Domain. The road that runs from here to Oninuma, parallel to the lake, is a highly recommended Inaichi course.



05 SPOT Oninuma

After climbing all the way up the hill, enjoy a wonderful view overlooking the vast Mount Bandai and a sand bridge (sandbank) unique to Oninuma inlet.

