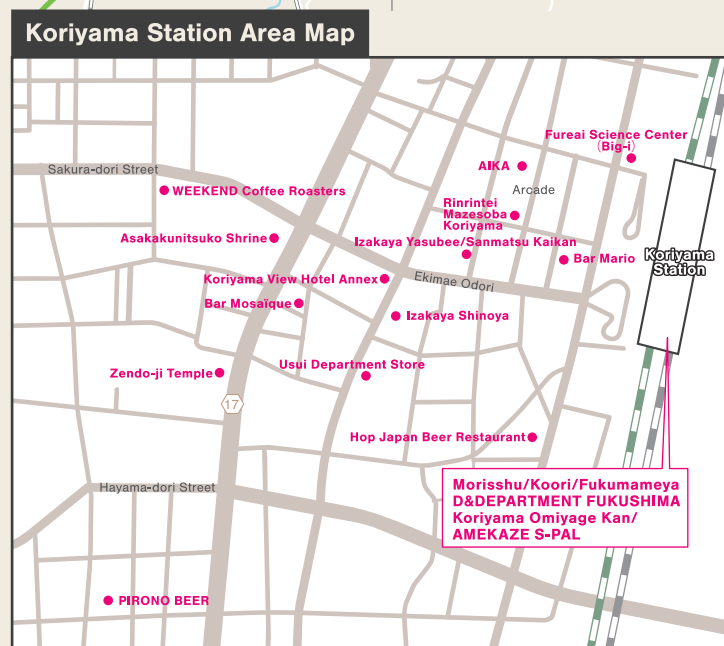
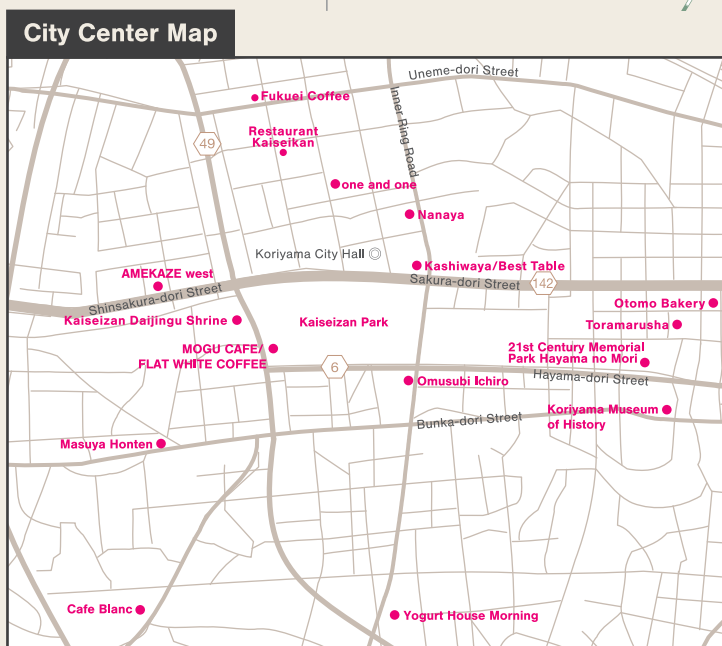


# KORIYAMA MAP



English / 英語

# KORIYAMA

TOHOKU, JAPAN

## TRAVEL GUIDE BOOK

Stunning seasonal scenery,  
fantastic food culture,  
unique experiences,  
and more!

About Koriyama	P. 2
Recommended Itineraries	P. 4
Gourmet	P. 16
Sweets & Cafes	P. 17
Sake & Souvenirs	P. 18



# ABOUT KORIYAMA

Koriyama, a welcoming gateway to northern Japan for travelers, is just a short trip from the Tokyo metropolitan area, making it the perfect base for exploring the Aizu region and the captivating Tohoku area.



### By Car

Urawa IC	135 minutes	Koriyama IC
Sendai-Minami IC	90 minutes	Koriyama IC

### By Expressway Bus

Shinjuku Expressway Bus Terminal	4 hours	Koriyama Station
Sendai Station	2 hours	Koriyama Station

### By Limousine Bus

Fukushima Airport	45 minutes	Koriyama Station
-------------------	------------	------------------

### By Shinkansen or Rail

Shin-Aomori Station	150 minutes
Akita Station	3 hours
Morioka Station	80 minutes
Yamagata Station	90 minutes
Sendai Station	40 minutes
Aizu-Wakamatsu Station	70 minutes
Nasushiobara Station	20 minutes
Tokyo Station	80 minutes

### Explore Koriyama by Rental Car

**Nippon Rent-A-Car**  
Koriyama Station West Exit  
ST 5-minute walk MAP C-3  
2-233-2 Omachi, Koriyama  
050-1712-2893

**TOYOTA Rent-A-Car Koriyama**  
Station Shinkansen Exit  
ST 5-minute walk MAP C-3  
2-18-10 Omachi, Koriyama  
024-939-0100

# Discover Koriyama

## Endless Adventure in Tohoku's Hidden Gem

Koriyama is located in the heart of Fukushima Prefecture, part of Japan's Tohoku Region. With convenient access via expressways and JR Koriyama Station, reaching Koriyama is a breeze whether by car, bus, or shinkansen. It's just 80 minutes from Tokyo Station and 40 minutes from Sendai Station on the shinkansen.

As Tohoku's second-largest economic hub after Sendai, Koriyama offers a variety of shopping malls, restaurants, and hotels to ensure a comfortable and enjoyable stay. Beyond its urban conveniences, Koriyama is surrounded by stunning natural attractions such as Mt. Adatara and Lake Inawashiro. Each season brings its own unique beauty: cherry blossoms in spring, vibrant sunflowers in summer, breathtaking foliage in fall, and snow in winter.

Koriyama takes pride in its abundant water sources, which nurture fresh vegetables, fruits, and locally crafted sake and beer. These ingredients are the foundation of Koriyama's unique culinary experiences, which visitors are encouraged to savor. Additionally, activities like fruit picking and traditional craft workshops provide memorable ways to connect with the local culture.

Experience the harmony of urban convenience and natural beauty in Koriyama. Through thoughtfully curated recommended itineraries, you'll discover the city's lifestyle, culture, and the unforgettable experiences it has to offer.

### COVER Hyottoko Dance, Takashiba Shichifukujin Dance

Traditional Handicraft Village "Takashiba Deko Yashiki" is the birthplace of a 300-year tradition of crafting papier-mâché dolls. Every year on the last Sunday of May, the Takashiba Deko Festival comes alive with vibrant performances, including the enchanting Takashiba Shichifukujin, or "Seven Lucky Gods" Dance, as well as the whimsical "Hyottoko Dance," featuring playful papier-mâché masks.





# Cherry Blossom-Viewing Strolls & Tasty Bites in Springtime Koriyama

View the route on Google Maps



**1 Omusubi Ichiro** 5-minute drive

Pick up freshly made, fluffy rice balls to take with you during your walk, with 20 unique handmade flavors to choose from!

1-13-20 Tsurumidan, Koriyama None 12 spaces

**2 Kaiseizan Park** 5-minute walk

At this cherry blossom-viewing spot, witness the stunning bloom of Japan's oldest Somei-Yoshino cherry tree, planted by the pioneers who shaped the foundation for Koriyama's development.

1-5 Kaisei, Koriyama 024-934-8733 137 spaces(4 large spaces)

**Kaiseizan Park Frontier Square**

Chic spots like cafes and gardening shops line this grassy plaza, adding charm to your stroll through the park.

**Chansey Playground "Lucky Park"**

Chansey Playground "Lucky Park" is a popular spot where visitors can enjoy playground equipment featuring Fukushima's mascot Pokémon, Chansey, as well as a playful Lickitung slide and more!

© Pokémon. © Nintendo/Creatures Inc./GAME FREAK inc.

**3 Kaiseizan Daijingu Shrine** 5-minute drive

Kaiseizan Daijingu Shrine, dedicated to Amaterasu, the Japanese Sun Goddess, offers a unique glimpse into Koriyama's rich culture.

3-1-38 Kaisei, Koriyama 024-932-1521 80 spaces

**4 Kaisei Kashiwaya** 30-minute drive

Famous as one of Japan's top three sweet manju buns, "Kashiwaya Usukawa Manju" is a specialty of the area. Visitors can even enjoy making their very own thin-skinned manju!

1-13-5 Asahi, Koriyama 024-922-5533 20 spaces

**Manju Shrine**

Behind the store lies the Manju Shrine, where the annual Manju Festival is held each spring in homage to the Great Manju for marriage blessings.

**5 Miharu Takizakura Weeping Cherry Tree** 25-minute drive

Designated a Natural Treasure, this ancient cherry tree is believed to be over 1,000 years old. Its blossoms are light red and cascade like a breathtaking waterfall.

Sakurakubo, Taki, Miharu-machi, Tamura-gun 0247-62-3690 (Miharu Tourism Association) 850 spaces

**6 Gyuho Yatsuyamada** 5-minute drive

Savor the delicious flavors of Kuroge Wagyu "Fukushima Beef" and "Hayama Kogen Pork," renowned meat brands of Fukushima Prefecture.

1-114 Yatsuyamada-Nishi, Koriyama 024-934-1129 20 spaces

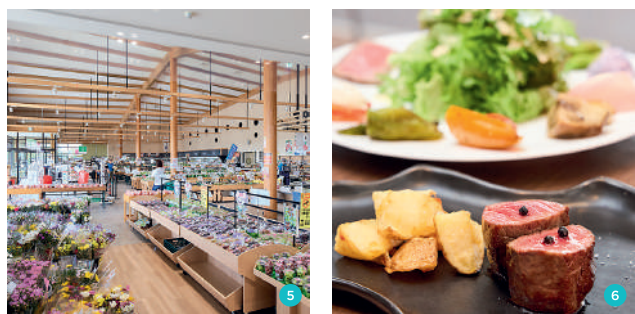
## More to explore! Other must-see cherry blossom spots

- |   |  |            |
|---|--|------------|
| <b>A Sasahara River Senbonzakura Cherry Trees</b> | Sasahara River, Mihota-machi Shimomoriya-gun, Koriyama | 70 spaces  |
| <b>B Gohyakubuchi Park</b>                        | 1-1 Yamazaki, Koriyama                                 | 11 spaces  |
| <b>C Fujita River Fureai Cherry Trees</b>         | Shimokawara, Horinouchi, Kikuta-machi, Koriyama        | 180 spaces |



# Summer in Koriyama: A Journey Through Glistening Waters and Lush Greenery

View the route on Google Maps



**1 Nunobiki Plateau "Kaze no Kogen"** 30-minute drive

Take in stunning panoramic views of Mt. Bandai and Lake Inawashiro from the highlands, where vibrant sunflowers bloom beneath 33 towering windmills.

Batobara, Akatsu, Konan-machi, Koriyama 024-983-2117 (Konan Tourism Association) 150 spaces (7 bus spaces)

**2 Ohtaya Shokudo** 5-minute drive

Indulge in a meal at this cozy diner with a breathtaking view of Lake Inawashiro. If you don't know what to order, the famous "Akahara (Haya) Tempura" set meal is highly recommended.

4807 Dojohama, Funatsu, Konan-machi, Koriyama 024-982-2525 5 spaces

**3 Lake Inawashiro (Tate Beach)** 15-minute drive

From Koriyama, enjoy a picture-perfect view of Lake Inawashiro with Mt. Bandai towering in the distance. With seven beaches, every spot offers a unique perspective of the majestic mountain.

Tatehama, Konan-machi, Koriyama 024-983-2117 (Konan Tourism Association) 300 spaces

**4 Fukushima Ose Winery** 25-minute drive

Discover Fukushima's bountiful fruits! Uncover the region's charm with exclusive wines from our onsite shop and fun winery tours in Ose-machi.

2 Goshigoshi, Tadano, Ose-machi, Koriyama 0120-320307 30 spaces (large vehicles welcome)

**5 Farmer's Market "Aguria"** 10-minute drive

A direct sales facility offering fresh locally-grown vegetables, a wide variety of seasonal fruits, and a cozy spot to enjoy coffee and meals.

1-20-1 Narita, Asaka-machi, Koriyama 024-945-7483 156 spaces (5 bus spaces)

**6 Farmhouse Italian Meat and Vegetable Cuisine ~Arigato~** 5-minute drive

The dishes, made with fresh and safe vegetables sourced directly from local farmers, are vibrant in color, full of flavor, and leave a lasting impression.

4-35 Asaka, Koriyama 024-983-9678 20 spaces

## Summer Festival Highlights



**Koriyama Beer Festival**

The entire main street in front of Koriyama Station transforms into a massive beer garden, offering a refreshing selection of cold beer and Koriyama's finest gourmet food. Plus, you can enjoy live music on stage!

Scheduled to be held in late July



**Koriyama Uneme Festival**

The largest festival in Koriyama, inspired by the legend of a court lady from the Nara period (710-94), features the unique "Odori-nagashi" (dancing stream) performed on the main street in front of the station.

Scheduled to be held in early August



# Fall in Love with Autumn at Koriyama's Spiritual Havens

View the route on Google Maps



## 1 Shiki no Sato Ryokusuien Flower Garden

ST 25-minute drive MAP C-2

A popular destination with a vast park bursting with seasonal flowers. In autumn, the vivid red maples and golden ginkgo trees create a breathtaking display of color.

71 Akatsumae, Horinouchi, Kikuta-machi, Koriyama to 208-1, Kawahara, Iwane, Motomiya  
024-959-6764 P 200 spaces (10 bus spaces)



## 2 Takayashiki Inari Shrine

ST 15-minute drive MAP D-3

Marked by around 100 vibrant vermilion torii gates standing tall against the rice paddies, the Takayashiki Inari Shrine is also a renowned spiritual spot.

281 Takayashiki, Shiraiwa-machi, Koriyama 024-943-6396 P 50 spaces



## 3 Garden Restaurant Sarara

ST 15-minute drive MAP D-3

A buffet restaurant offering around 50 types of homemade dishes and drinks, all focused on safety, health, and peace of mind.

348-4 Niimichi, Saito, Miharu-machi, Tamura-gun  
024-942-1465 P 200 spaces (large vehicles welcome)



## 4 Niida Honke

ST 20-minute drive MAP D-3

A sake brewery with a 300-year history, famous for its "natural sake" made without pesticides or chemical fertilizers. You can also observe the traditional sake brewing process (reservations required).

139 Takayashiki, Kanezawa, Tamura-machi, Koriyama  
0120-552-313 P 20 spaces



## 5 Oyasuba Historical Park

ST 15-minute drive MAP C-3

Discover the ancient Oyasuba Kofun burial mounds, featuring one keyhole-shaped mound and four circular mounds. Immerse yourself in history and intrigue at this park while learning about the ancient burial sites!

160 Oyasuba, Daizenji, Tamura-machi, Koriyama  
024-965-1088 P 120 spaces (7 large spaces)



### Making a Magatama!

Craft your own magatama, ancient amulets believed to ward off evil spirits, and take home a unique souvenir to remember your trip. You'll be so engrossed in the process, time will fly by!

## 6 Izakaya Shinoya

ST 5-minute walk MAP Station area

Enjoy a wide variety of top-quality sake, featuring locally brewed selections from across the prefecture. The "Sake Tasting Set," paired with seasonal dishes, is a popular choice!

1st Floor Club Daiichi Bldg., 11-1 Naka-machi, Koriyama  
024-983-0081 P None



### Fall Festivities



## Asakakunitsuko Shrine Autumn Grand Festival

ST 10-minute walk MAP Station area

September 27-29 every year

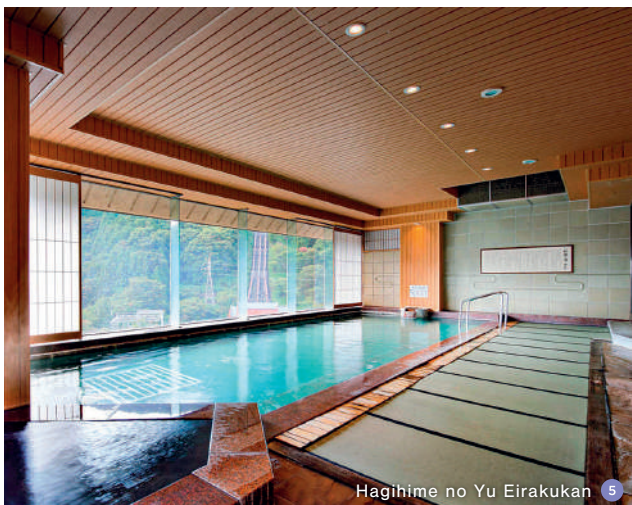
Located just a short distance from Koriyama Station, the Asakakunitsuko Shrine hosts a festival to give thanks for abundant harvests and the safety of the local community. Since 1765, the festival has featured a grand procession of three sacred mikoshi (portable shrines) and 29 town mikoshi, accompanied by festival floats playing traditional Hachiman Bayashi music.

1-6-23 Shimizudai, Koriyama 024-932-1145



# A Warm Journey Through Koriyama's Winter Wonderland

View the route on Google Maps



## 1 Listel Ski Fantasia

ST 50-minute drive MAP A-1

Enjoy a variety of courses for skiers of all levels, plus a fun sledding slope with snow escalators for the kids.

Listel Park, Kawageta, Inawashiro-machi, Yama-gun  
0242-66-4111 P 500spaces



## 2 Michi-no-Eki-Mae Inawashiro Strawberry Farm

ST 55-minute drive MAP A-1

A popular spot utilizing the latest equipment, where visitors can pick strawberries year-round and indulge in the luxury of eating different varieties of fresh strawberries.

4 Shimoda, Katada, Inawashiro-machi, Yama-gun  
0242-93-5570 P 164 spaces (16 large spaces)



## 3 Shidahama

ST 50-minute drive MAP A-2

A beautiful beach with pristine white sand and green pines, overlooking Lake Inawashiro. In winter, it becomes a sanctuary for swans and ducks migrating from the north.

Tsuboyo, Inawashiro-machi, Yamagata-gun  
0242-62-2048 ( Inawashiro Tourism Association) P Available

## 4 Roots Inawashiro Lake Area

ST 40-minute drive MAP A-2

A unique complex on the banks of Lake Inawashiro featuring a cafe, store, sauna, and a glamping site. Enjoy an authentic outdoor sauna experience with beautiful views of the lake.

1855 Hamashida, Yamagata, Inawashiro-machi, Yama-gun  
0242-93-9022 P 30 spaces



## 5 One-Day Hot Springs

ST 30-minute drive MAP B-2

Experience 800 years of history at the Bandai-Atami Hot Springs resort, famous for its skin-soothing beautiful skin hot spring water. Drop by and unwind with a relaxing soak!

**Onsen Petit Hotel Yukori**  
1-109 Atami, Atami-machi, Koriyama  
024-984-3811 P 7 spaces

**Hagihime no Yu Eirakukan**  
4-47 Atami, Atami-machi, Koriyama  
024-984-2135 P 70 spaces

**Bandai-Atami Ekimae Foot Bath**  
1 Atami, Atami-machi, Koriyama  
024-984-2625 (Bandai-Atami Tourism Association) P 10 spaces

\* Those with tattoos may not be able to use all facilities. Please inquire in advance.

## 6 Tempura Sakuma

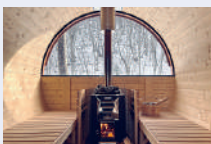
ST 10-minute drive MAP C-3

Delight in exquisite tempura, made from seasonal ingredients and vegetables sourced from across Japan. Savor the flavors of the seasons in every bite.

1-379 Tomita-Higashi, Koriyama  
070-1148-1766 P 20 spaces



### More to explore!



## OUSE Camp & Sauna TUULI

ST 35-minute drive MAP B-3

Located near Koriyama, this campground features Fukushima Prefecture's first outdoor barrel sauna and a hand-built authentic hut sauna. Enjoy camping with friends, surrounded by a gentle breeze and the soothing sound of the river, for a truly healing experience.

19 Iwairo, Tadano, Ose-machi, Koriyama 080-6007-8101 P 10 spaces





# Experience Tradition and History on a Cozy Journey Through Koriyama!

Unwind in a warm and welcoming setting while immersing yourself in the traditional handicrafts and historic culture of Koriyama.

## COURSE

- 1 Koriyama Museum of History  
25-minute drive
- 2 Traditional Handicraft Village "Takashiba Deko Yashiki"
- 3 Lunch
- 4 Asakano Kiln  
5-minute drive
- 5 Sato Coffee Honten  
5-minute drive
- 6 AMEKAZE west

View the route on Google Maps



Recommended additions to this route

- Takayashiki Inari Shrine  
→ P.6
- Niida Honke  
→ P.6

1



### Koriyama Museum of History

The first facility in Tohoku to combine both museum and archive, with an open space where visitors can relax and unwind.

1-5-30 Hayama, Koriyama  
024-923-8921 P Hayama Multi-story Parking Building (568 spaces)

Sharing Koriyama's history and culture both locally and globally, and preserving it for the next generation



2



Enjoy picking out souvenirs and painting papier-mâché



### Traditional Handicraft Village "Takashiba Deko Yashiki"

25-minute drive MAP D-2

Sleeped in 300 years of tradition, this village of artisans currently features four workshops where you can witness firsthand the creation of handicrafts, such as washi paper papier-mâché dolls and Miharugoma wooden toy horses, a cherished good luck charm.

169 Tateno, Takashiba, Nishita-machi, Koriyama (Takashiba Deko Yashiki Tourism Association)  
080-2817-1505 P 50 spaces (5 large spaces)

3

## Lunch: Traditional Soba or a Healthy Vegan Lunch

### Udon and Soba Kuniya

20-minute drive MAP C-3



Select from the restaurant's wide variety of homemade soba and udon noodle dishes with their silky-smooth texture and fragrant aroma. Be sure to try the freshly pounded rice cakes, too!

38 Yajihoncho, Koriyama  
024-952-9123 P 13 spaces

### Branch

15-minute drive MAP C-3



A vegan restaurant offering wholesome meals and desserts that will bring a smile to your face, along with a selection of curated vegan food products.

142-1 Enoue, Minamikoizumi, Fukuyama-machi, Koriyama  
024-953-8705 P 7 spaces

Symbols



Shopping



Restaurant



Experience/Activity



Accommodation



Translation Guide Recommended



Direct Transportation From Koriyama Station



Map (Back Cover) No.



4

Even first-timers can enjoy crafting their own unique piece of pottery!



### Asakano Kiln

20-minute drive MAP C-3

Admire the deep, earthy tones and texture of the clay as you craft your own memorable Obori Somayaki-style pottery piece in this fun and casual pottery-making experience.

1-12 Nakano, Koriyama  
024-973-6320 P 14 spaces



5

Get lost in nostalgia



### Sato Coffee Honten

20-minute drive MAP C-3

A cozy cafe-restaurant set in a beautifully renovated traditional Japanese house with a stately and majestic gate. Enjoy homemade desserts and Western cuisine while relaxing in a charming atmosphere.

1-18 Nakano, Koriyama  
024-954-4036 P 33 spaces

6



Lead an authentic, natural lifestyle with fresh local ingredients



### AMEKAZE west

15-minute drive MAP City Center

A specialty store offering a diverse selection of original items crafted with a focus on quality ingredients and flavor, along with local products beloved both within and outside the prefecture.

1-11-5 Shima, Koriyama  
024-954-6761 P 20 spaces



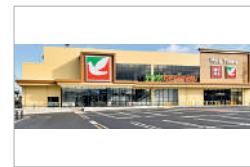
## Koriyama's Local Hubs

These three popular stores, beloved by Koriyama residents and headquartered in the city, have played a key role in supporting local development.



### Kourakuen

This nationwide ramen chain is known for its delicious signature dishes, including Chuka Soba noodles and gyoza dumplings, all served at reasonable prices.



### York-Benimaru

This supermarket chain, with around 250 stores across five prefectures in southern Tohoku and northern Kanto, offers a variety of products that make for the perfect snack on the go or souvenir.



### Aoki Fruits (Juice Factory Karin)

Delivering health through delicious fruit, the company is behind "Aoki Fruit Shop" and the popular juice store "Juice Factory Karin."





# Koriyama's Sake and Gourmet Delights: A Delicious Journey into Food Culture

Immerse yourself in Koriyama's rich culinary heritage. From trending to traditional sake breweries and dining spots, discover the secrets behind the city's most beloved flavors.



- DAY 1 COURSE**
- 1 Komyozan Zendo-ji Temple  
10-minute walk
  - 2 Otomo Bakery  
10-minute walk
  - 3 21st Century Memorial Park Hayama no Mori  
10-minute walk
  - 4 PIRONO BEER Brewery  
10-minute walk
  - 5 Koriyama View Hotel Annex

View the route on Google Maps



Recommended additions to this route

- Kaiseizan Park  
→ P.4
- Kaiseizan Daijingu Shrine  
→ P.4

An unforgettable experience:  
Step into the serene world of Buddhism



## Komyozan Zendo-ji Temple

The closest temple to Koriyama Station offers sutra copying (reservations required), the Terakoya Marche, and more. Begin your Koriyama journey with wishes for safety and happiness!

1-1-23 Shimizudai, Koriyama  
024-922-0517 15 spaces

Enjoy matcha in a teahouse  
with a serene Japanese garden view



## 21st Century Memorial Park Hayama no Mori

Relax in the park with a treat from Otomo Bakery, or enjoy a bowl of matcha and traditional Japanese sweets at the teahouse "Hayamasou."

1-16-7 Hayama, Koriyama  
024-924-2194 Hayama Multi-Story Parking Lot (568 spaces)

A local favorite for 100 years,  
"Creambox" is a must-try specialty!



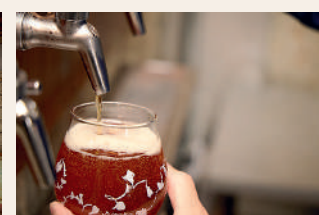
## Otomo Bakery

ST 15-minute walk MAP City Center

Koriyama's soul food, "Creambox," features a slice of thick milk bread topped with a delightfully sweet milk-flavored cream.

24-9 Toramaru-machi, Koriyama  
024-923-6536 8 spaces

Koriyama's trailblazing brewery is  
a secret escape in the city!

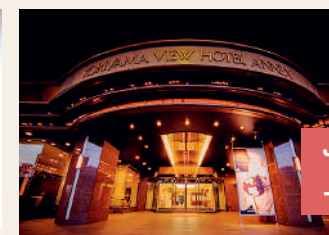


## PIRONO BEER Brewery

ST 15-minute walk MAP Station Area

Savor fresh beer at the brewery's bar, where a full menu of homemade dishes have been crafted to perfectly complement your brew. Enjoy the delicious pairings.

12-6 Domae-machi, Koriyama  
024-973-6612 None



Just a 5-minute walk from Koriyama Station  
– an ideal base for a leisurely stroll around town!

## Koriyama View Hotel Annex

ST 5-minute walk MAP Station Area

Located along the main approach to Asakakunitsuko Shrine, this beloved hotel is famous for its breakfast buffet. Its refined, relaxing atmosphere offers the perfect respite for travelers.

10-10 Nakamachi, Koriyama  
024-939-1111 27 spaces (affiliated parking lot)

## DAY 2 COURSE

- 5 Koriyama View Hotel Annex  
10-minute walk
- 6 Koriyama City Fureai Science Center  
5-minute drive
- 7 Japanese Dining Bar Don Don  
15-minute drive
- 8 Asaka Distillery Sasanokawa Shuzo

## Koriyama City Fureai Science Center

ST 3-minute walk MAP Station Area

Visitors can dive into space exploration with interactive exhibits on topics like lunar and spin-3 gravity. Don't miss the observation lobby, offering a panoramic view of Koriyama, along with a fascinating railroad diorama.

20th–24th Floor, Skyscraper "Big-i," 2-11-1 Ekimae, Koriyama  
024-936-0201 Skyscraper "Big-i" Parking Lot (437 spaces)

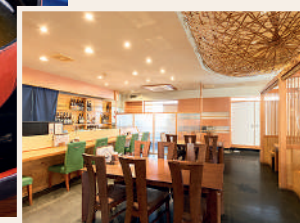
HERE

6



Officially certified by Guinness World Records  
as the highest planetarium in the world!

Indulge in a delicious lunch of  
Koriyama's signature Uneme beef!



## Japanese Dining Bar Don Don

ST 5-minute drive MAP C-3

This popular restaurant, showcasing the best of local ingredients, provides a peaceful Japanese-style setting in which to unwind. Don't miss the "Hitsumabushi Gozen" with premium Uneme beef, a beloved specialty.

2-203-1 Yokozuka, Koriyama  
024-941-5501 25 spaces (up to mini-bus size)



## Asaka Distillery Sasanokawa Shuzo

ST 15-minute drive MAP C-3

The oldest distillery in Tohoku, crowned the world's best distillery in 2022. Take a tour of the facility and try your hand at whisky blending (both require reservations).

1-178 Sasagawa, Koriyama  
024-945-0261 10 spaces



Visit the oldest local whisky distillery  
in Tohoku

5

8



# Food, Nature and Shopping: Joyful Discoveries in Koriyama

After an unforgettable outdoor adventure, take a leisurely stroll through town and indulge in some shopping. In the evening, enjoy bar hopping at stylish local establishments.



## COURSE

- 1 Lakeside Activities  
25-minute drive (varies by location)
- 2 Ose Rural Lifestyle Experience  
15-minute drive
- 3 Berry's Park Koriyama & Berry's Cafe
- 4 Shopping
- 5 Izakaya Yasubee

View the route on Google Maps



### Recommended additions to this route

- Fukushima Ose Winery  
→ P.5
- Shiki no Sato Ryokusuien Flower Garden  
→ P.6



Whether you're adventurous or the leisurely type, enjoy nature your way

## Lakeside Activities

ST 45-minute drive MAP A-2

Immerse yourself in the amazing natural beauty of Lake Inawashiro. Enjoy breathtaking seasonal scenery and activities (some require reservations). For inquiries, contact "Koriyama Shonen Lake Kohan no Mura."

112 Muranishi, Yokozawa, Konan-machi, Koriyama (Koriyama Shonen Lake Kohan no Mura)  
024-982-2115 P 30 spaces



A warm, hometown feel that will make you want to visit again



## Ose Rural Lifestyle Experience

ST 30-minute drive (varies by location) MAP B-3

Experience the charm and riches of rural life through farming, ancient "satoyama" forest landscapes, and meals with farmers. Connect with the true essence of rural Japan (reservations required).

47 Kubota, Tadano, Ose-machi, Koriyama (Office)  
080-3495-2232 P Varies by location



## Berry's Park Koriyama & Berry's Cafe

ST 20-minute drive MAP C-3

A place to savor over 100 varieties of unique blueberries. Enjoy the onsite cafe, fruit shop, and blueberry picking (reservations required).

62 Kajita, Katahira-machi, Koriyama 080-9634-3131 P 60 spaces



Blueberry picking at a friendly farm

Symbols



Shopping



Restaurant



Experience/Activity



Accommodation



Translation Guide Recommended



Direct Transportation From Koriyama Station



Map (Back Cover) No.

# 4

## Shop for One-Of-A-Kind Items in Koriyama

If you find something you love on your trip, treat yourself to it as a souvenir! Visit shopping spots beloved by Koriyama locals.

### Orient Park Hiwada

ST 20-minute drive MAP C-2

A diverse selection of stores, including the popular general merchandise store "at home," a 100-yen shop, restaurants, and a supermarket, all in one place!

Maeda, Hiwada-machi, Koriyama  
1,000 spaces



### Shopping Center "AEON TOWN Koriyama"

ST 5-minute drive MAP C-3

With a wide range of stores offering fashion, gourmet food, culture, and everyday essentials, visitors can enjoy a full day of shopping and exploration.

2-88 Matsuki-cho, Koriyama  
1,700 spaces



### Usui Department Store

ST 5-minute walk MAP Station Area

The one and only department store in the prefecture, a beloved "dream store" for the locals. Head to the first basement floor for the perfect souvenirs.

13-1 Naka-machi, Koriyama  
Available (2,200 spaces (Paid)/ Discounts available with purchases)



## Izakaya Yasubee

ST 5-minute walk MAP Station Area

A local favorite restaurant that utilizes locally grown ingredients and produce from its own farm. Enjoy the cozy warmth of the wooden interior and the nostalgic retro ambiance.

1-3-12 Omachi, Koriyama  
024-933-9326 P None

This is the taste of Koriyama!



## BAR HOPPING Around Koriyama Station

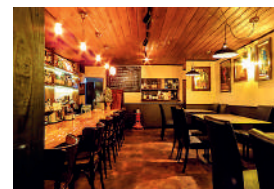
There are over 30 bars situated near the west exit of Koriyama Station, each with a rich history of entertaining visitors to Koriyama and adding color to the city.



Bar Mario ST 5-minute walk MAP Station Area

A stylish bar with a truly impressive selection of alcoholic beverages. Savor freshly-squeezed fruit cocktails and delicious food in a space featuring a striking driftwood chandelier.

Ekimae Green Bldg., 2-3-2 Ekimae, Koriyama  
024-934-7650 P None



Bar Mosaïque ST 10-minute walk MAP Station Area

Enjoy a memorable evening indulging in dishes prepared by skilled Japanese chefs, such as carpaccio made from Uneme beef.

8-7 Nakamachi, Koriyama  
024-905-2891 P None



Fruit Restaurant & Bar Aika ST 5-minute walk MAP Station Area

Popular for its cocktails and parfaits made with generous amounts of fresh seasonal fruit! A bar perfect for both drinkers and non-drinkers alike.

2-7-14 Ekimae, Koriyama  
024-923-9201 P None



# A Healing Getaway to Koriyama, Where the Art of Handicrafts Comes Alive

Relish dishes made with seasonal, locally sourced ingredients, enjoy hands-on experiences, and soak in hot spring waters that'll leave your skin glowing, creating memories you'll cherish!

## DAY 1 COURSE

- 1 Horaiya Honten  
15-minute drive
- 2 THE RESTAURANT  
30-minute drive
- 3 Bandai-Atami Souvenir and Produce Shop  
10-minute drive
- 4 Hotel Hana no Yu



### Places to visit after checkout

- Kaiseizan Daijingu Shrine  
→ P. 4
- Fukuei Coffee  
→ P. 17



1

Make your own tasty homemade miso in a hands-on experience

### Horaiya Honten

ST 10-minute drive MAP C-3

A store that produces and sells healthy fermented foods like amazake made from 100% rice koji, Sagohachi pickles, raw koji, and fermented red bean paste. Miso-making workshops (reservations required) are also highly recommended.

54-2 Kawakubo, Kanaya, Tamura-machi, Koriyama  
024-943-2380 4 spaces (large vehicles welcome)



2



A unique gourmet experience



### THE RESTAURANT

ST 15-minute drive MAP C-3

A restaurant in the "THE KITCHEN PLATFORM" complex offering course meals made with local ingredients. The facility also features a grocery store and cafe.

4-230 Asaka, Koriyama 024-973-8062 40 spaces

Includes seasonal designs!



### Bandai-Atami Souvenir and Produce Shop

ST 30-minute drive MAP B-2

A souvenir shop in the hot spring resort area, featuring a popular personalized engraving service by artist AmaTera on Aizu's traditional lucky charm, "okiagari koboshi!"

2-15-1 Atami, Atami-machi, Koriyama  
024-953-5408 (Personalized engraving: AmaTera 080-2833-3428) 325 spaces



Souvenirs ranging from gourmet foods to unique handcrafted items

3



Indulge in hot springs and gourmet cuisine to your heart's content!

## DAY 2 COURSE

- 4 Hotel Hana no Yu  
50-minute drive
- 5 Tatami Village Kuboki Tatami  
35-minute drive
- 6 Nanaya Asahi  
10-minute drive
- 7 Fruits Peaks Koriyama Cosmos-dori Street

### TATAMI Village Kuboki Tatami

ST 30-minute drive MAP C-4

Experience tatami firsthand at this interactive complex. Enjoy a factory tour, hands-on crafting, and a cozy cafe where you can relax on tatami mats. The Uji matcha lattes and matcha canelé are especially popular.

55 Nakano-machi, Sukagawa 0248-72-8989 20 spaces



Factory tours and tatami coaster workshops are also a big hit!

5



Healthy and colorful meals with a delicate flavor

### Nanaya Asahi

ST 10-minute drive MAP City Center

Enjoy dishes made with freshly prepared dashi soup stock that nourish both body and soul. Every set meal includes a delightful side dish buffet!

1-3-2 Asahi, Koriyama 024-973-8303 26 spaces



Fruit takes center stage! Don't miss the seasonal specials!

### Fruits Peaks Koriyama Cosmos-dori Street

ST 20-minute drive MAP C-3

Tuck into seasonal fruit parfaits and other fresh, ripe fruits in a variety of dishes, from sweet desserts to savory lunch options.

3-174-1 Tsutsumi, Koriyama 024-953-5556 50 spaces



7



# Gourmet Guide

## Ramen



**Masuya Honten Daishin** **ST** 15-minute drive **MAP** City Center

Founded in 1868, the restaurant's original Koriyama Black Ramen has been a beloved dish since the Taisho era (1912-1926) and was designated as a "100-Year Food" by the Agency for Cultural Affairs.

📍 1-4-13 Daishin, Koriyama 📞 None 📅 15 spaces

## Ramen



**Ramen Okamura** **ST** 20-minute drive **MAP** C-3

With a wide variety of menu options, the "Oka Black" ramen, featuring the rare Aizu Jidori chicken, is an absolute must-try!

📍 24-1 Koganebayashi, Otsuki-machi, Koriyama 📞 024-900-3138 📅 16 spaces

## Ramen



**Rinrintei Mazesoba Koriyama** **ST** 5-minute walk **MAP** Station Area

A unique take on mazesoba noodles with a rich, flavorful sauce, hearty ingredients, and extra-thick noodles.

📍 2-7-16 Ekimae, Koriyama 📞 024-991-6570 📅 None

## Restaurant



**Ristorante Martello** **ST** 10-minute drive **MAP** C-3

Enjoy exquisite Italian cuisine featuring the finest Tohoku ingredients, such as "Char-grilled Fukushima Wagyu Beef (A5) Heifer Ichibo."

📍 1-368 Tomitahigashi, Koriyama 📞 024-973-8611 📅 24 spaces

## Restaurant



**Best-Table** **ST** 15-minute drive **MAP** City Center

Try the recommended "Salad Plate Lunch," featuring locally grown seasonal ingredients. Vegan options are also available.

📍 1-14-1 Asahi, Koriyama 📞 024-983-3129 📅 15 spaces

## Restaurant



**Hop Japan Beer Restaurant Koriyama** **ST** 5-minute walk **MAP** Station Area

A beer restaurant operated by a brewery, offering dishes made with fresh local ingredients.

📍 56 Elite Bldg., 1-9-18 Ekimae, Koriyama 📞 024-953-6767 📅 None

## Soul Food



**Sanmatsu Kaikan** **ST** 5-minute walk **MAP** Station Area

A popular, long-established diner founded in 1952, offering a wide variety of classic dishes from noodles to set meals.

📍 1-13-13 Omachi, Koriyama 📞 024-932-0173 📅 None

## Soul Food



**MOGU CAFE** **ST** 15-minute drive **MAP** City Center

Enjoy a gourmet burger made with 100% Japanese beef, served on the grounds of the scenic Kaiseizan Park.

📍 1-5 Kaisei, Koriyama 📞 024-983-7717 📅 Kaiseizan Park Parking Lot

## Soul Food



**Furukawa Shokudo** **ST** 20-minute drive **MAP** C-3

Dig into a hearty meal with the "Half & Half Set Meal," where you can choose two dishes, such as fried chicken tempura and liver stir-fried with garlic chives!

📍 56-3 Shinikeshita, Otsuki-machi, Koriyama 📞 024-952-4152 📅 13 spaces

## Local Specialty



**Food and Sake Morisshu** **ST** Inside the Station **MAP** Station Area

Grab a drink at Koriyama Station! Try delicious local sake, craft beer, and a menu featuring regional dishes.

📍 2nd Floor JR Koriyama Station, 195 Hiuchida, Koriyama 📞 024-933-5015 📅 None

## Local Specialty

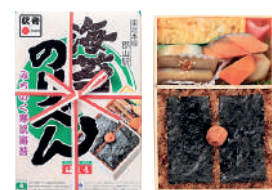


**Aizu Soba and Japanese Cuisine Koori** **ST** Inside the Station **MAP** Station Area

Enjoy 100% soba noodles made with Aizu Yamato Yukimuro buckwheat, paired with local sake and delicious regional specialties.

📍 2nd Floor JR Koriyama Station, 195 Hiuchida, Koriyama 📞 024-921-2020 📅 None

## Local Specialty



**Fukumameya Koriyama Station** **ST** Inside the Station **MAP** Station Area

Purchase "Ekiben" station lunchboxes made with local ingredients, including the nationally popular "Nori Nori-ben."

📍 JR Koriyama Station, 195 Hiuchida, Koriyama 📞 024-943-0528 (Headquarters) 📅 None

# Take a breather at a cafe



**pâtisserie Café Blanc** **ST** 15-minute drive **MAP** City Center

Sweets as dazzling as jewelry, with plenty of delicious desserts to choose from.

📍 94-22 Haryukita, Otsuki-machi, Koriyama 📞 024-934-8818 📅 15 spaces



**Yogurt House Morning Saikon Honten** **ST** 15-minute drive **MAP** City Center

Treat yourself to velvety yogurt with seasonal fruits and a sweet dessert. Lunch also available.

📍 5-12-10 Saikon, Koriyama 📞 024-938-0762 📅 17 spaces



**Kominka Cafe Toramarusha** **ST** 5-minute drive **MAP** City Center

A whimsical cafe in a 100-year-old traditional Japanese house. Enjoy popular sweets and lunch made with local ingredients.

📍 1-17 Toramaru-machi, Koriyama 📞 024-983-3920 📅 3 spaces



**Restaurant Kaiseikan** **ST** 15-minute drive **MAP** City Center

Sip coffee and enjoy Western cuisine in a warehouse cafe, surrounded by charming antiques.

📍 2-16-14 Kuwano, Koriyama 📞 024-932-3927 📅 22 spaces



**one and one** **ST** 15-minute drive **MAP** City Center

A cafe and flower shop operated by a coffee roastery. Let the colorful dried flowers soothe your soul.

📍 YK Bldg., 2-21-10 Asahi, Koriyama 📞 024-900-0125 📅 5 spaces



**WEEKEND Coffee Roasters** **ST** 10-minute walk **MAP** Station Area

Relax with a book in hand, or strike up a conversation at the counter. A special space where you can unwind and relax at your own pace.

📍 1-6-9 Shimizudai, Koriyama 📞 None 📅 None



**Fukuei Coffee Kuwano** **ST** 15-minute drive **MAP** City Center

Homemade baked treats and additive-free gelato pair perfectly with freshly roasted coffee.

📍 4-2-13 Kuwano, Koriyama 📞 None 📅 8 spaces



**Bakery Izumigamori** **ST** 5-minute drive **MAP** C-3

A bakery filled with freshly baked goods, offering a wide variety of comforting savory breads.

📍 2-88 Matsuki-cho, Koriyama 📞 024-983-5861 📅 1,700 spaces



**FLAT WHITE COFFEE FACTORY** **ST** 15-minute drive **MAP** City Center

The terrace overlooking the lake is the perfect spot to relax. Be sure to try the store's famous flat white.

📍 1-5 Kaisei, Koriyama 📞 None 📅 Kaiseiyama Park Parking Lot

## Other Gourmet Spots

Gyuhō (p. 4), Kaisei Kashiwaya (p. 4), Ohtaya Shokudo (p. 5), Farmhouse Italian Meat and Vegetable Cuisine ~Arigato~ (p. 5), Garden Restaurant Sarara (p. 6), Otomo Bakery (p. 10), PIRONO BEER (p. 10), Japanese Dining Bar Don Don (p. 11), Izakaya Yasubee (p. 13), Bar Mario (p. 13)

Izakaya Shinoya (p. 6), Roots Inawashiro Lake Area (p. 7), Tempura Sakuma (p. 7), Kuniya (p. 8), Branch (p. 8), Sato Coffee (p. 9), Bar Mosaïque (p. 13), Aika (p. 13), THE RESTAURANT (p. 14), Nanaya (p. 15), TATAMI Village (p. 15), Fruits Peaks (p. 15)



## Local Drinks & Alcoholic Beverages



Six unique sake breweries in Koriyama, each with its own distinctive character

Koriyama's sake is crafted from flavorful rice and pristine water, nurtured by the region's rich natural landscapes. The breweries here take pride in their exceptional products.

A.B. Niida Honke "Niida Heroes" "Odayaka"  
☎ 0120-552-313

C. Sasanokawa Shuzo "Fukunoka Junmai Ginjo 'Fu'"  
☎ 024-945-0261

D. Sato Shuzoten "Daiginjo Fujinori"  
☎ 024-922-1763

E. Wakazeki Shuzo "Daiginjo Sakamizuki"  
☎ 024-945-0010

F. Watanabe Shuzo Honten "Yukikomachi Daiginjo Genshu 51 Tokuro"  
☎ 024-972-2401

G. Miharuru Shuzo "Miharuru-Goma Junmai Ginjo"  
☎ 0247-62-2816



Fine Blended Whisky  
Yamazakura Black Label

This award-winning blended whisky is mild, smooth, and a true pleasure to drink.

Asaka Distillery  
☎ 024-945-0261



Vin de Ollage  
(Koriyama Rosé 2023)

A blend of two grape varieties from Koriyama, offering a fresh taste and clean, crisp finish.

Fukushima Ose Winery  
☎ 024-953-3131



## Koriyama Souvenirs

Koriyama offers an  
heartwarming food and  
new to fall in love

incredible array of  
sake, with something  
with on every visit!



HOPJAPAN IPA,  
HOPJAPAN White

Craft beers brewed with home-grown, fresh hops, delivering a uniquely vibrant and refreshing taste.

Hop Japan  
☎ 0247-61-5330



Nakanosawa Kokeshi

Meet "Tako-bozu," with its adorable, quirky face – red around the eyes and a nose that flares out – guaranteed to bring a smile!

Nakanosawa Kokeshi  
Project Executive Committee  
☎ None

Amazake

Amazake crafted by a long-established local koji shop. Its smooth mouthfeel and refreshing lemon flavor make it easy to enjoy.

Horaiya Honten  
☎ 024-943-2380



Momo no Megumi

Pure 100% straight juice, brimming with the natural sweetness and lusciousness of peaches.

JA-Fukushima Mirai  
☎ 024-573-0759



Tatami Coaster

The vibrant colors and pleasant texture will transform your tabletop into a stunning setting. Pair the coasters with your favorite glasses and bottles for the perfect touch!

Kuboki Tatami ☎ 0248-72-8989



Craft Sake  
"Chokozake -Chocolush-"

A decadent chocolate drink for adults, blending the fruity notes of cacao, the smooth sweetness of koji, and a bold kick of Japanese sansho pepper and other spices.

haccoba -Craft Sake Brewery-  
☎ None

## Handicrafts & Traditional Crafts

NODATE mug

This outdoor lacquerware showcases Aizu craftsmanship at its finest – lightweight, antibacterial, and heat-retaining, complete with a stylish leather strap.

Sekibikodo  
☎ 0242-27-3200



Mini Stole

An Aizu cotton stole that gets softer and more textured with every wear. Its petite size adds extra charm!

HARAPPA  
☎ 0242-367-903



Futae Suzunari  
Tumbler (Indigo)

This double-layered tumbler boasts a beautiful color and smooth texture, with the added bonus of a delightful, bell-like chime when gently tapped.

Asakano Kiln  
☎ 024-973-6320



Mame Daruma & Miharuru-Goma

Miharuru-Goma wooden toy horses are a popular gift symbolizing good health and longevity. Cute Mame Daruma dolls come in a variety of fun colors!

Traditional Handicraft Village "Takashiba Deko Yashiki"  
☎ 080-2817-1505

The perfect places  
to pick up souvenirs!



Souvenir Shop "Koriyama Omiyage Kan"

☎ 1st Floor JR Koriyama Station, 195 Hiuchida, Koriyama ☎ 024-923-0033

A vast selection of famous confectionery, sake, and local delicacies. Conveniently located within the station, you can shop for the perfect souvenirs right up until your Shinkansen Bullet Train or expressway bus departure.

D&DEPARTMENT FUKUSHIMA

☎ 2nd Floor JR Koriyama Station, 195 Hiuchida, Koriyama  
☎ 024-983-9700

AMEKAZE S-PAL Koriyama

☎ S-PAL Koriyama, 187 Hiuchida, Koriyama  
☎ 024-953-7160

Usui Department Store

☎ 13-1 Nakamachi, Koriyama  
☎ 024-932-0001 (Main number)

Bandai-Atami Souvenir  
and Produce Shop

☎ 2-15-1 Atami, Atami-machi, Koriyama  
☎ 024-953-5408

## Food



Usukawa  
Manju Tsui-Tsui

Delicate, thin-skinned manju buns packed in an adorable little box featuring iconic tourist spots. Grab one for yourself, too!

Kashiwaya  
☎ 024-956-5511



Edible Olive Oil

The delightful crunch of fried garlic and onion adds a burst of flavor – a perfect topping for pasta or toast.

Odawaraya  
☎ 024-943-0300



Kaden Yubeshi

With a history spanning 160 years, this traditional fresh confectionery is crafted from carefully selected rice, filled with sweet red bean paste, and delicately steamed to perfection.

Kannoya  
☎ 0120-040-141



Local Fukushima Coffee  
(Drip Pack)

Specialty coffee featuring images of famous local landmarks. The packaging, adorned with local sightseeing spots, also makes for a perfect souvenir.

Fukuei Coffee ☎ 024-953-7035

Bring the ultimate taste of Koriyama home!

Spread these creamy delights on milk bread to create your very own "Creambox" – a sweet, comforting treat that brings pure happiness with every bite.

A. Odawaraya "Creambox Cream"  
☎ 024-943-0300

B. Marufuku "Just Spread: Creambox"  
☎ 024-973-8029

C. Nagatoya "Creambox Spread"  
☎ 0568-22-8511



Daikokuya  
Walnut Yubeshi

This legendary confection, dating back over 100 years, boasts the rich aroma of honjozo soy sauce, a perfectly balanced sweetness, and a generous helping of walnuts.

Koriyama Daikokuya ☎ 024-932-3517



A Renowned Fruit Shop's  
Fruit Caramel Sandwich

Enjoy tangy-sweet, caramelized fruit wrapped in smooth milk chocolate and sandwiched between crispy rice flour cookies.

Fruits Peaks  
☎ 024-926-0333



Mamador

A classic Koriyama treat, featuring a delicate sweetness from buttery, golden brown dough filled with creamy milk-flavored white bean paste.

Sanmangoku  
☎ 0120-81-3059



Koriyama Black Souvenir Ramen  
(Dried Noodles)

Indulge in decadent Koriyama Black, a local ramen with a bold, rich, and sharply flavored pitch-black broth, now available to take home.

Masuya Honten  
☎ None